



# LC-MS/MS Quantitation of Underivatized Glyphosate and Other Polar Pesticides

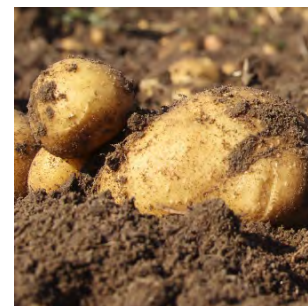
André Schreiber and Wen Jin  
*SCIEX, Concord, Ontario (Canada)*

RUO-MKT-11-3896-A For Research Use Only. Not for use in diagnostic procedures.



# Overview - Glyphosate Analysis

- Glyphosate, broad spectrum herbicide used
  - Against weeds and grasses
  - As desiccants to dry off crops before harvest
  - On transgenic crops resistant to glyphosate / glufosinate
  - Glyphosate ~ 60% of the worldwide herbicide sales
- Before LC-MS there was LC-FLD
  - Derivatization using FMOC and o-Phthalaldehyde
- Early LC-MS/MS methods
  - Flow injection analysis (FIA)
  - Ion chromatography (IC)
- More recent LC-MS/MS methods
  - HILIC
  - Ion exchange chromatography
  - Porous graphitic carbon (Hypercarb)
- Sample preparation
  - QuPPE (M. Anastassiades et al. EURL-SRM (2016) version 9)
  - Dilute and shoot to analyze liquid samples



## SRM-Phobia...

SRMs often require...



❖ **tedious or unfamiliar sample preparation steps e.g.:**

- *pH adjustments*
- *Derivatization*
- *Cleavage*
- *Head-space sampling*

❖ **separation/detection techniques different from those typically used in MRMs and often not available in labs, e.g.:**

- *“Exotic” columns for LC- or GC-separation*
- *“Exotic” mobile phases (LC)*
- *“Exotic” Instrumental-configurations*



# Objective of our Project

- Evaluation of published glyphosate methods
  - Routine quantitation of glyphosate, glufosinate and metabolites using LC-MS/MS without derivatization
  - Target LOQ of 100 ppb for food testing (after QuPPE extraction)
  - Target LOQ of 100 ppt for water testing (dilute and shoot)
  - High confidence in identification due to expected matrix interferences
    - MRM ratios, Full scan MS/MS, Differential Mobility Separation using SelexION® Technology, HR-MS/MS (pending)
  - Detection using the SCIEX QTRAP® 6500+ system

**EURL-SRM**  
 Quick Method for the Analysis of numerous Highly Polar Pesticides in Foods of Plant Origin via LC-MS/MS Involving Simultaneous Extraction with Methanol (QuPPE-Method)  
 Authors: M. Anastassiades, G. Aulic, A. Bertram, E. Espin, S. Zaccaroni, C. Man, C. Pignatelli, S. G. Park, D. B. S. B. S. B.

Content	
1.1	Scope and Field of Application
1.2	References and Considerations
1.3	Chemicals
1.4	Equipment
1.5	Reagents
1.6	Samples and Standards
1.7	Extraction / Derivatization / Filtration
1.8	Sample Analysis
1.9	Retention Times
1.10	Preparation of calibration standards
1.11	QuPPE Method of analysis
1.12	LC-MS/MS Measurements
1.13	Method 1: Glyphosate & CG AS 11"
1.14	Method 2: Glyphosate & CG AS 11+AC"
1.15	Method 3: Glyphosate & CG Hypocotyl"
1.16	Method 4: ProChlorPro"
1.17	Method 5: Fruits and Seeds Hypocotyl"
1.18	Method 6: Vegetables & CV"
1.19	Method 7: Quin & CG Glabrous"
1.20	Method 8: Quin & CG MS/MS Analyte"
1.21	Method 9: Quin & CG MethylChloro"
1.22	Method 10: Quin & CG MethylChloro"
1.23	Method 11: Quin & CG MethylChloro"
1.24	Method 12: Quin & CG MethylChloro"
1.25	Method 13: Quin & CG MethylChloro"
1.26	Method 14: Quin & CG MethylChloro"
1.27	Method 15: Quin & CG MethylChloro"
1.28	Method 16: Quin & CG MethylChloro"
1.29	Method 17: Quin & CG MethylChloro"
1.30	Method 18: Quin & CG MethylChloro"
1.31	Method 19: Quin & CG MethylChloro"
1.32	Method 20: Quin & CG MethylChloro"
1.33	Method 21: Quin & CG MethylChloro"
1.34	Method 22: Quin & CG MethylChloro"
1.35	Method 23: Quin & CG MethylChloro"
1.36	Method 24: Quin & CG MethylChloro"
1.37	Method 25: Quin & CG MethylChloro"
1.38	Method 26: Quin & CG MethylChloro"
1.39	Method 27: Quin & CG MethylChloro"
1.40	Method 28: Quin & CG MethylChloro"
1.41	Method 29: Quin & CG MethylChloro"
1.42	Method 30: Quin & CG MethylChloro"
1.43	Method 31: Quin & CG MethylChloro"
1.44	Method 32: Quin & CG MethylChloro"
1.45	Method 33: Quin & CG MethylChloro"
1.46	Method 34: Quin & CG MethylChloro"
1.47	Method 35: Quin & CG MethylChloro"
1.48	Method 36: Quin & CG MethylChloro"
1.49	Method 37: Quin & CG MethylChloro"
1.50	Method 38: Quin & CG MethylChloro"
1.51	Method 39: Quin & CG MethylChloro"
1.52	Method 40: Quin & CG MethylChloro"
1.53	Method 41: Quin & CG MethylChloro"
1.54	Method 42: Quin & CG MethylChloro"
1.55	Method 43: Quin & CG MethylChloro"
1.56	Method 44: Quin & CG MethylChloro"
1.57	Method 45: Quin & CG MethylChloro"
1.58	Method 46: Quin & CG MethylChloro"
1.59	Method 47: Quin & CG MethylChloro"
1.60	Method 48: Quin & CG MethylChloro"
1.61	Method 49: Quin & CG MethylChloro"
1.62	Method 50: Quin & CG MethylChloro"

M. Anastassiades et al.  
 QuPPE of EURL-SRM (2016)

**TN-1173**  
 APPLICATIONS  
 phenomenex

**Results and Discussion**

The direct analysis approach has been developed for the separation of glyphosate and its related species. The method uses a high-pH mobile phase on a high-pH column (Polaris) with a high-pH buffer (100 mM ammonium acetate). The method is suitable for the analysis of glyphosate and its related species. The method is suitable for the analysis of glyphosate and its related species. The method is suitable for the analysis of glyphosate and its related species.

Phenomenex TN-1173

**Journal of Regulatory Science**  
 Regulatory Science  
 Volume 7, Number 1, 2015

**Direct Determination of Glyphosate, Glufosinate, and AMPA in milk by Liquid Chromatography/tandem mass spectrometry**

Nung Chamkasem<sup>1</sup>, Cynthia Miller<sup>1</sup>, Tiffany Himmels<sup>1</sup>

**Abstract**

A single high-throughput liquid chromatography/tandem mass spectrometry (LC-MS/MS) method was developed for the determination of glyphosate, aminomethylphosphonic acid (AMPA) and glufosinate in milk using a microflow liquid chromatography system with weak anion-exchange column. The method was validated for accuracy, precision, and detection limit. The method was validated for accuracy, precision, and detection limit. The method was validated for accuracy, precision, and detection limit.

N. Chamkasem et al.  
 J. of Regulatory Science (2015)

# MS/MS Conditions

- MS/MS detection using QTRAP<sup>®</sup> 6500+ system
  - IonDrive<sup>™</sup> Turbo V source with ESI probe (negative polarity)
  - IS -4500V, CUR 30 psi, Gas1 50 psi, Gas2 70 psi, CAD high, TEM 700°C
  - Multiple Reaction Monitoring (Q3 low resolution)
  - Full scan MS/MS with CE -35 V and CES 15

Compound	Q1 (amu)	Q3 (amu)	DP (V)	CE (V)
<i>Glyphosate</i>	168	63	-30	-26
	168	150	-30	-14
	168	124	-30	-16
	168	81	-30	-20
<i>AMPA</i>	110	63	-15	-26
	110	79	-15	-36
	110	81	-15	-16
	110	80	-15	-24
<i>Glufosinate</i>	180	63	-50	-66
	180	95	-50	-24
	180	136	-50	-22
	180	85	-50	-24
<i>MMPA</i>	151	133	-10	-18
	151	63	-10	-44
	151	107	-10	-20
	151	78	-10	-28

# LC Conditions

- Method 1 (EURL-SRM)

- Modified since the column was not available in the original dimension and particle size
- Hypercarb 50 x 2.1 mm 3 $\mu$ m
- Gradient of water/methanol (95/5) + 1% acetic acid and methanol + 1% acetic acid at flow rate 0.2 to 0.4 mL/min
- Injection of 10 - 50  $\mu$ L

- Method 2 (US-FDA)

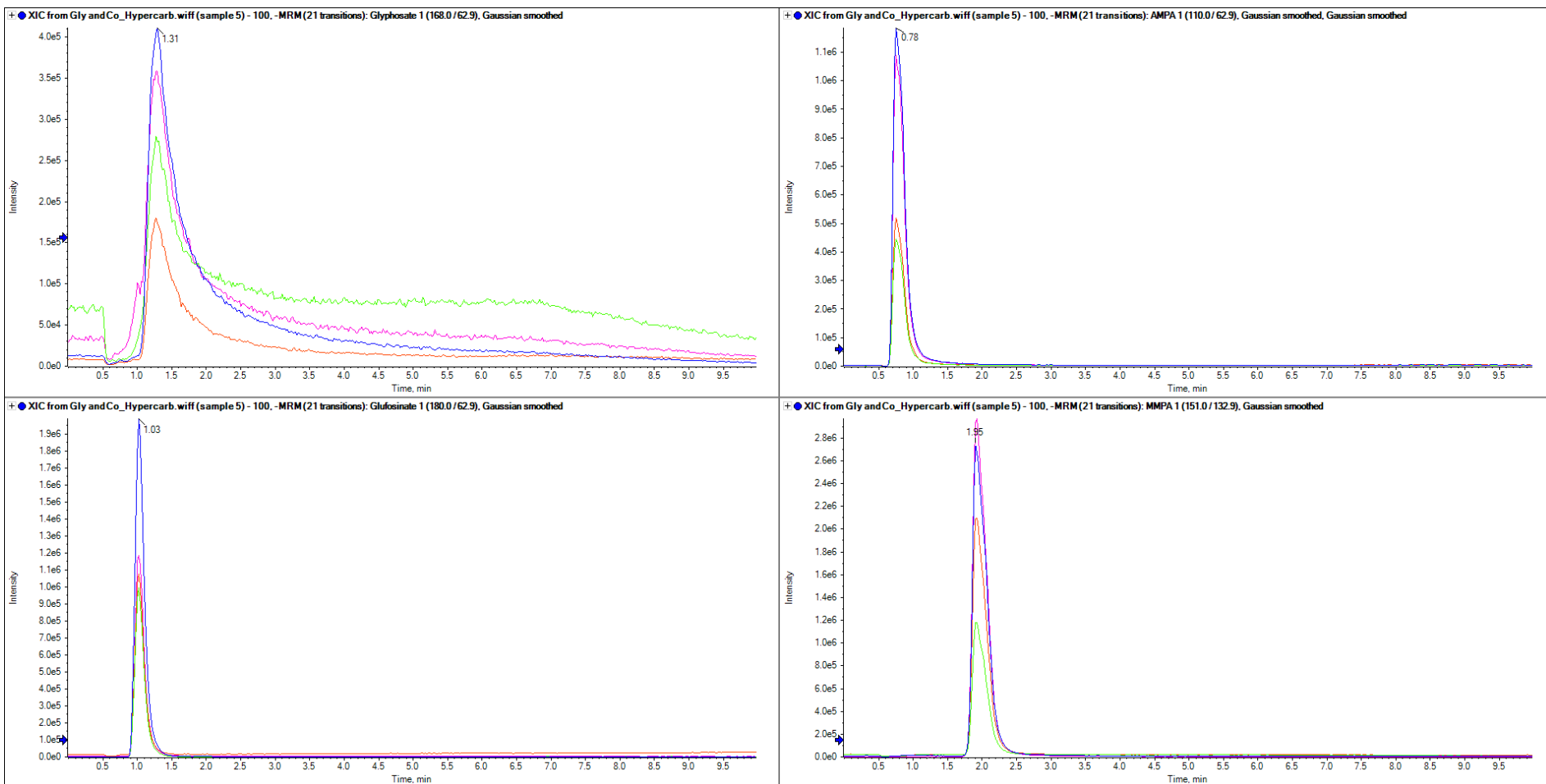
- Acclaim Trinity Q1 100 x 3 mm 3 $\mu$ m
- Gradient of water + 50 mM ammonium formate/formic acid (pH=2.9) and acetonitrile at flow rate 0.5 mL/min
- Injection of 10 - 50  $\mu$ L

- Method 3 (PHX)

- LUNA NH<sub>2</sub> 50 x 2 mm 3 $\mu$ m
- Gradient of water + 10 mM ammonium bicarbonate (pH=10) at flow rate 0.4 mL/min
- Injection of 10 - 50  $\mu$ L

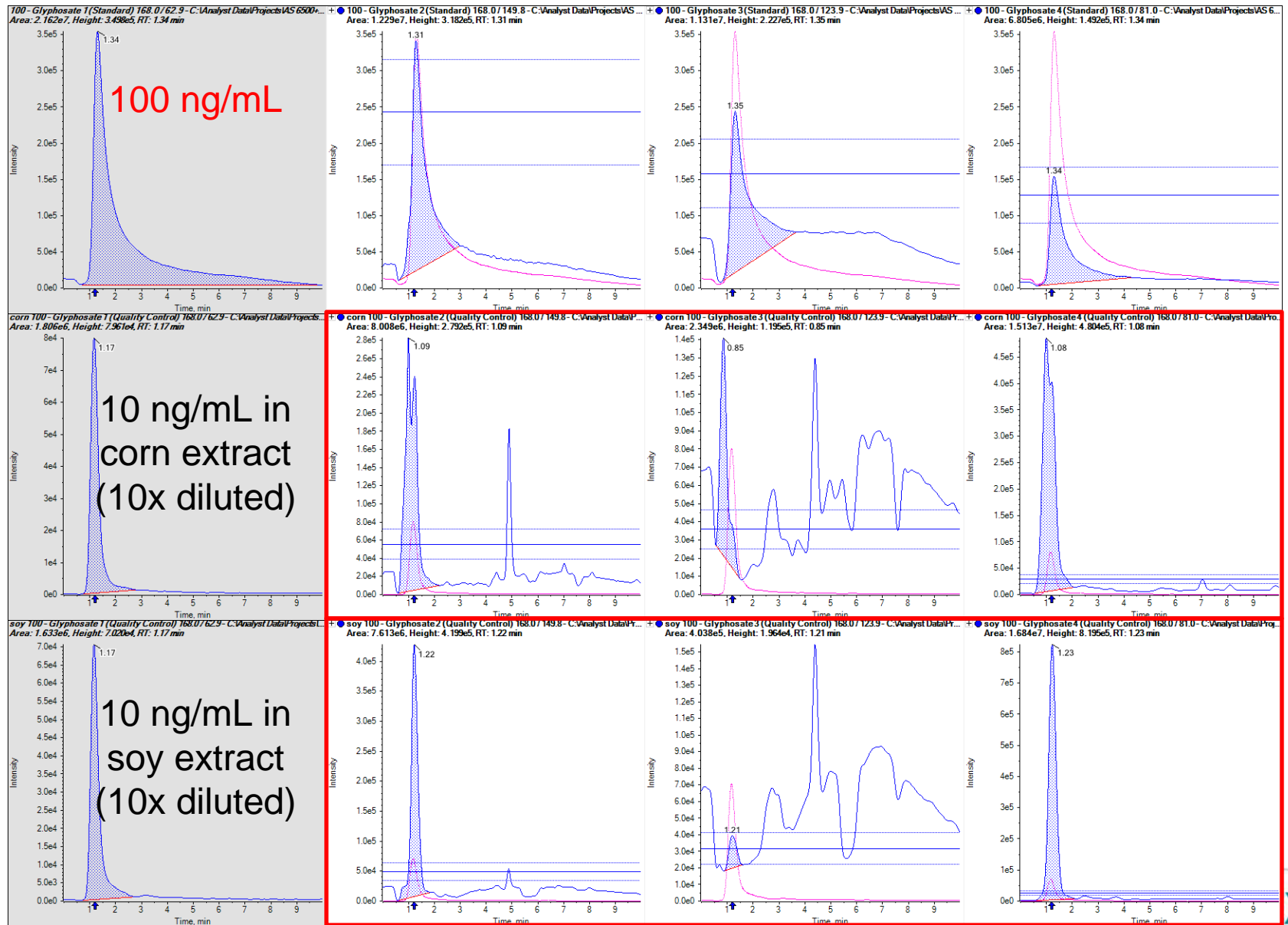
# Method 1 (Hypercarb water/methanol + 1% acetic acid)

## 100 ng/mL Standard



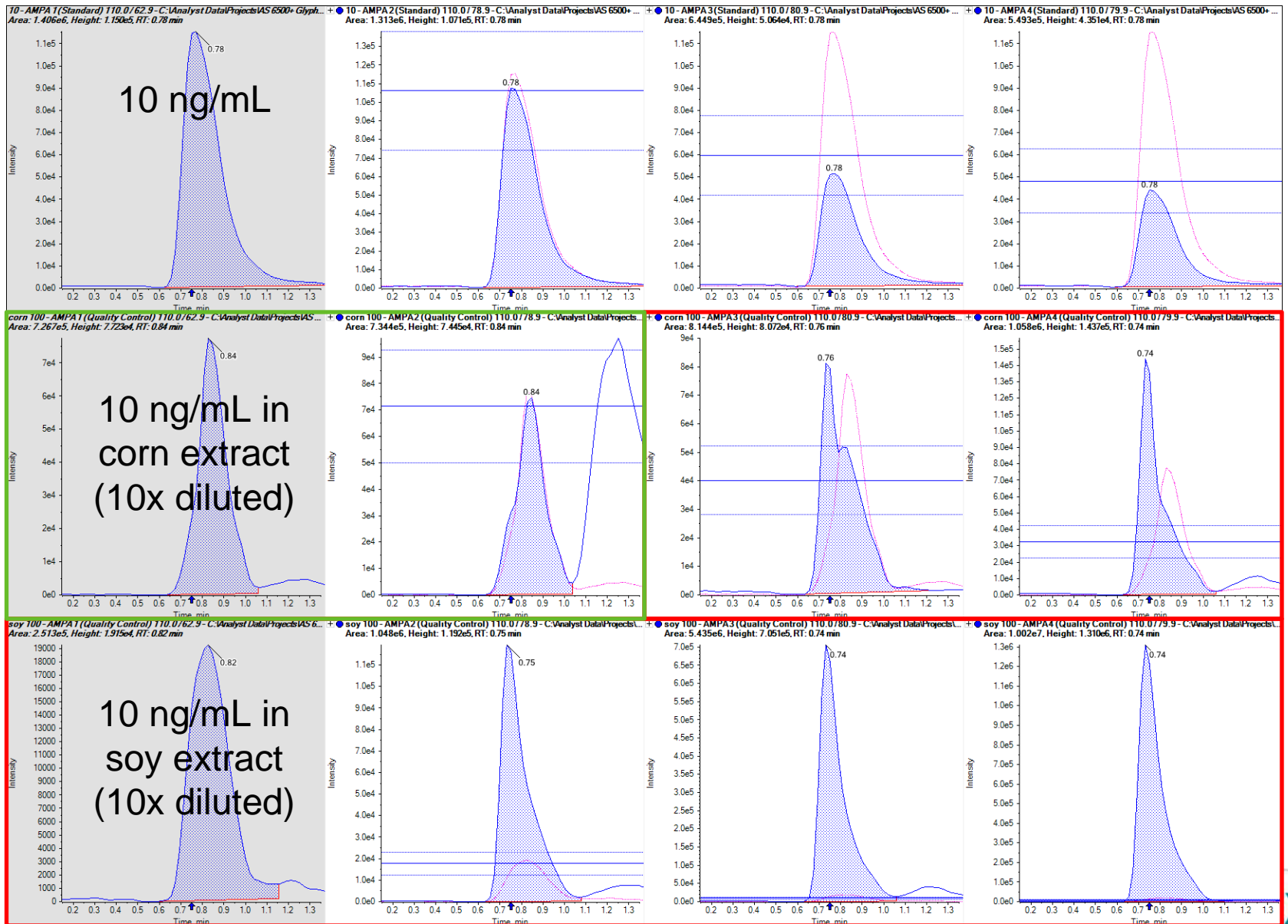
Column was primed with 30 injections of QuPPE extracts of spinach

# Method 1 Performance – Glyphosate

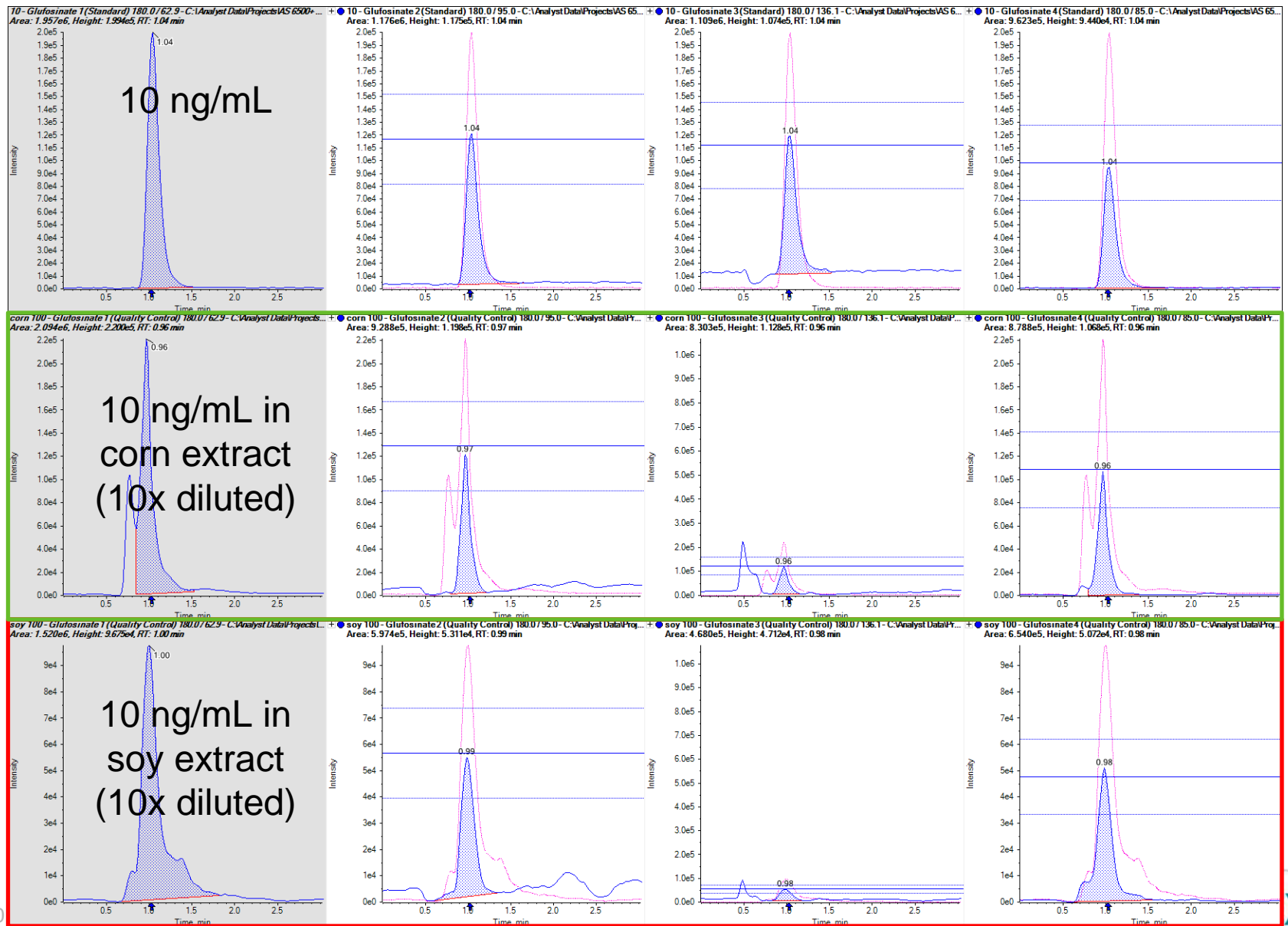




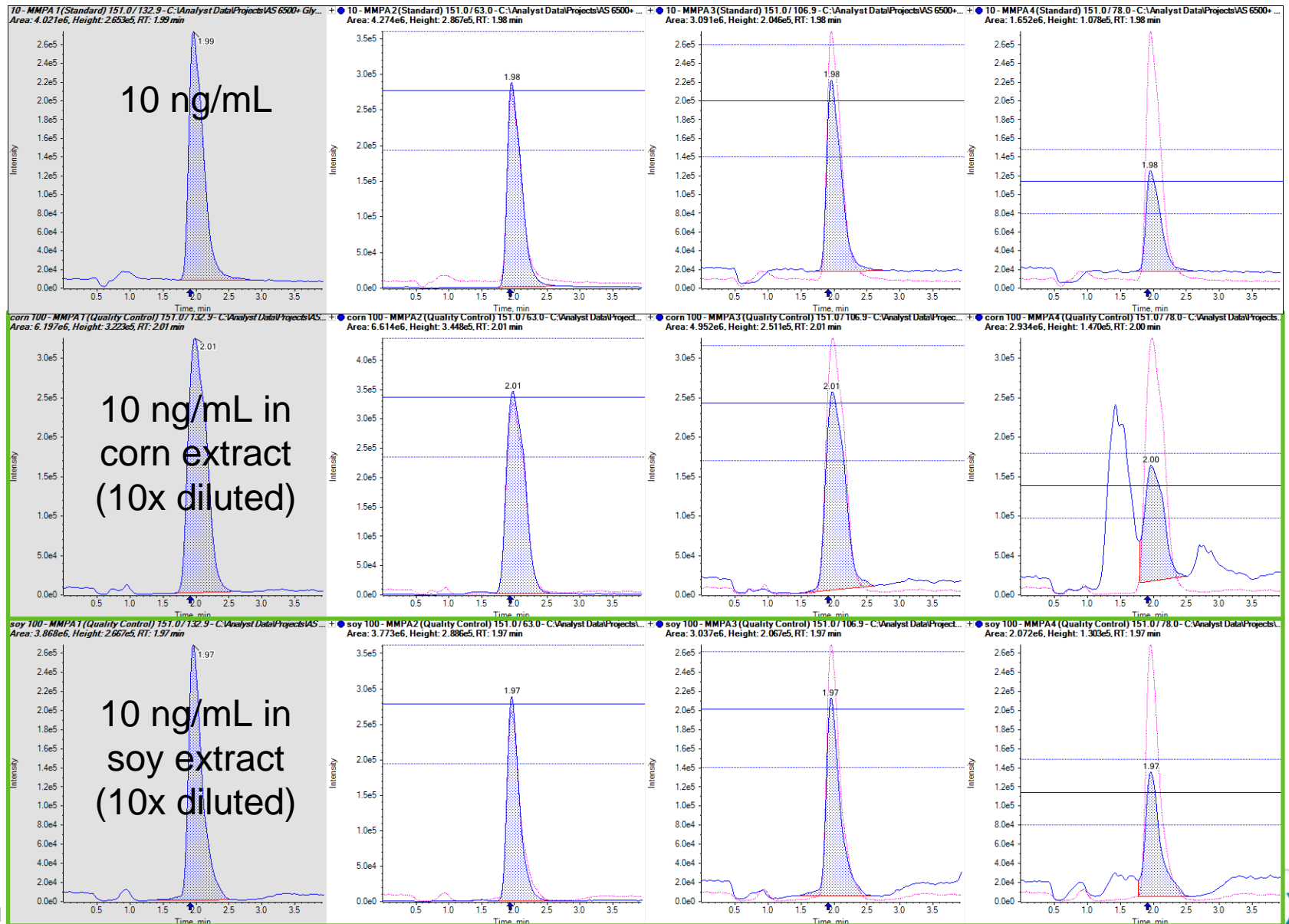
# Method 1 Performance – AMPA



# Method 1 Performance – Glufosinate



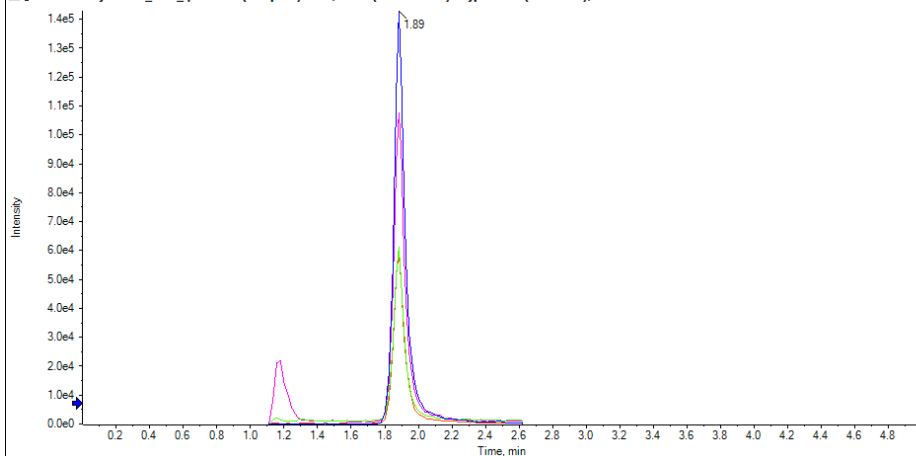
# Method 1 Performance – MMPA



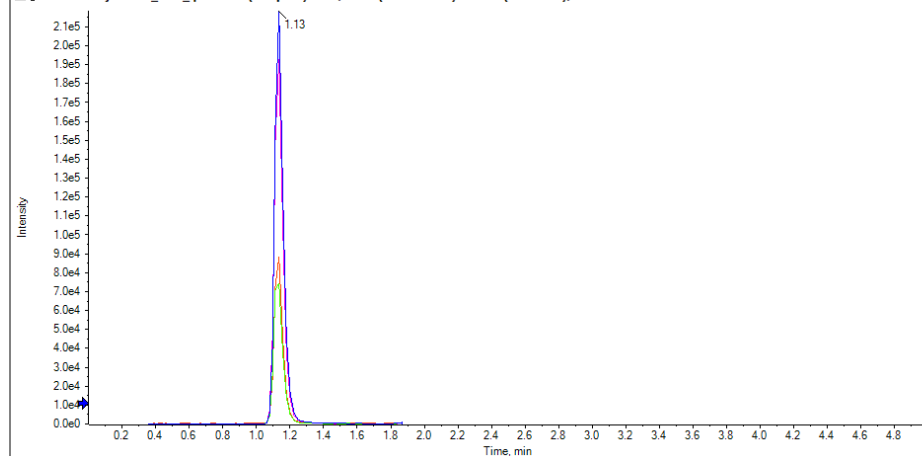
# Method 2 (Trinity Q1 ammonium formate pH=2.9)

## 100 ng/mL Standard

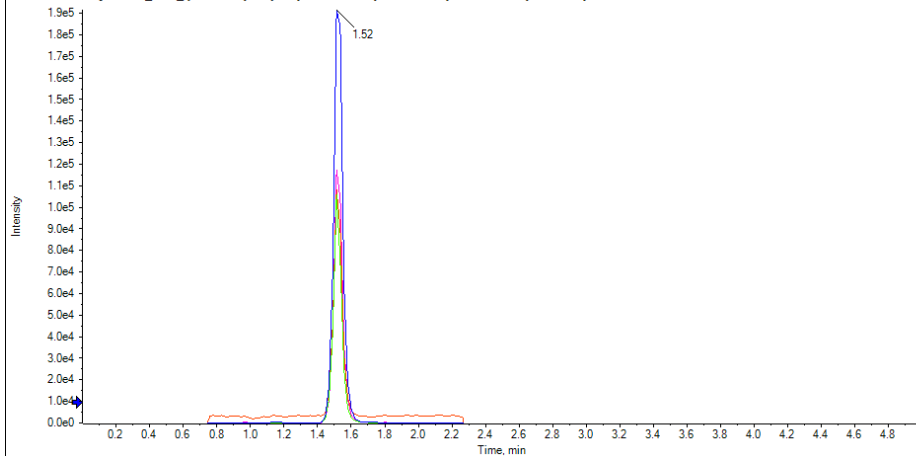
• XIC from Gly and Co\_FDA\_quant.wiff (sample 7) - 100. -MRM(17 transitions): Glyphosate 1 (168.0/62.9), Gaussian smoothed



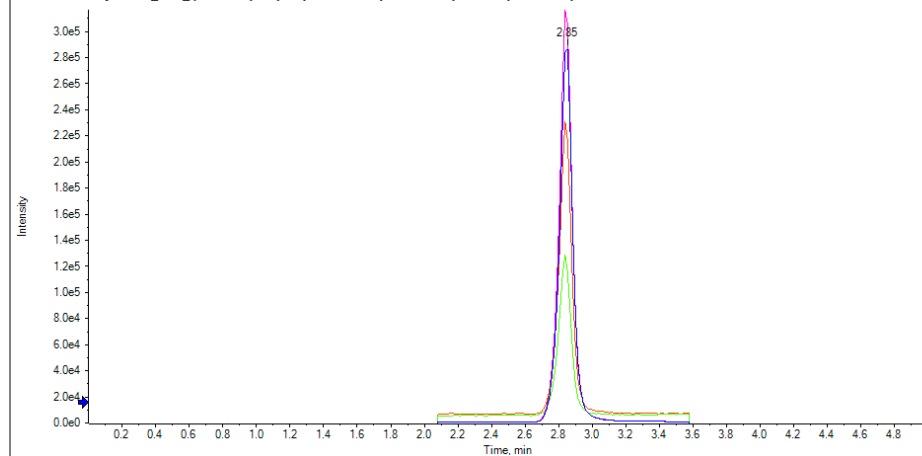
• XIC from Gly and Co\_FDA\_quant.wiff (sample 7) - 100. -MRM(17 transitions): AMPA 1 (110.0/62.9), Gaussian smoothed



• XIC from Gly and Co\_FDA\_quant.wiff (sample 7) - 100. -MRM(17 transitions): Glufosinate 1 (180.0/62.9), Gaussian smoothed



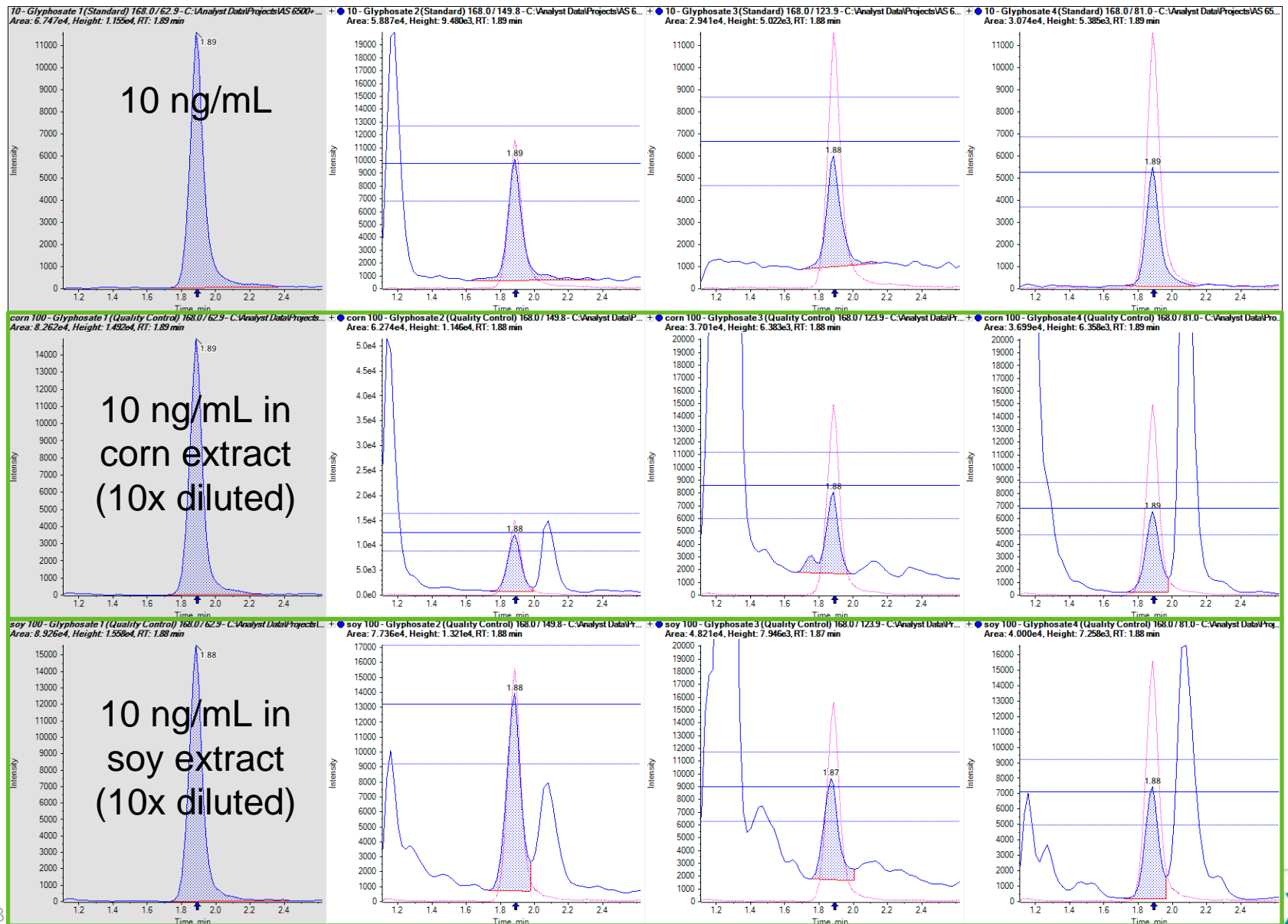
• XIC from Gly and Co\_FDA\_quant.wiff (sample 7) - 100. -MRM(17 transitions): MPPA 1 (151.0/132.9), Gaussian smoothed



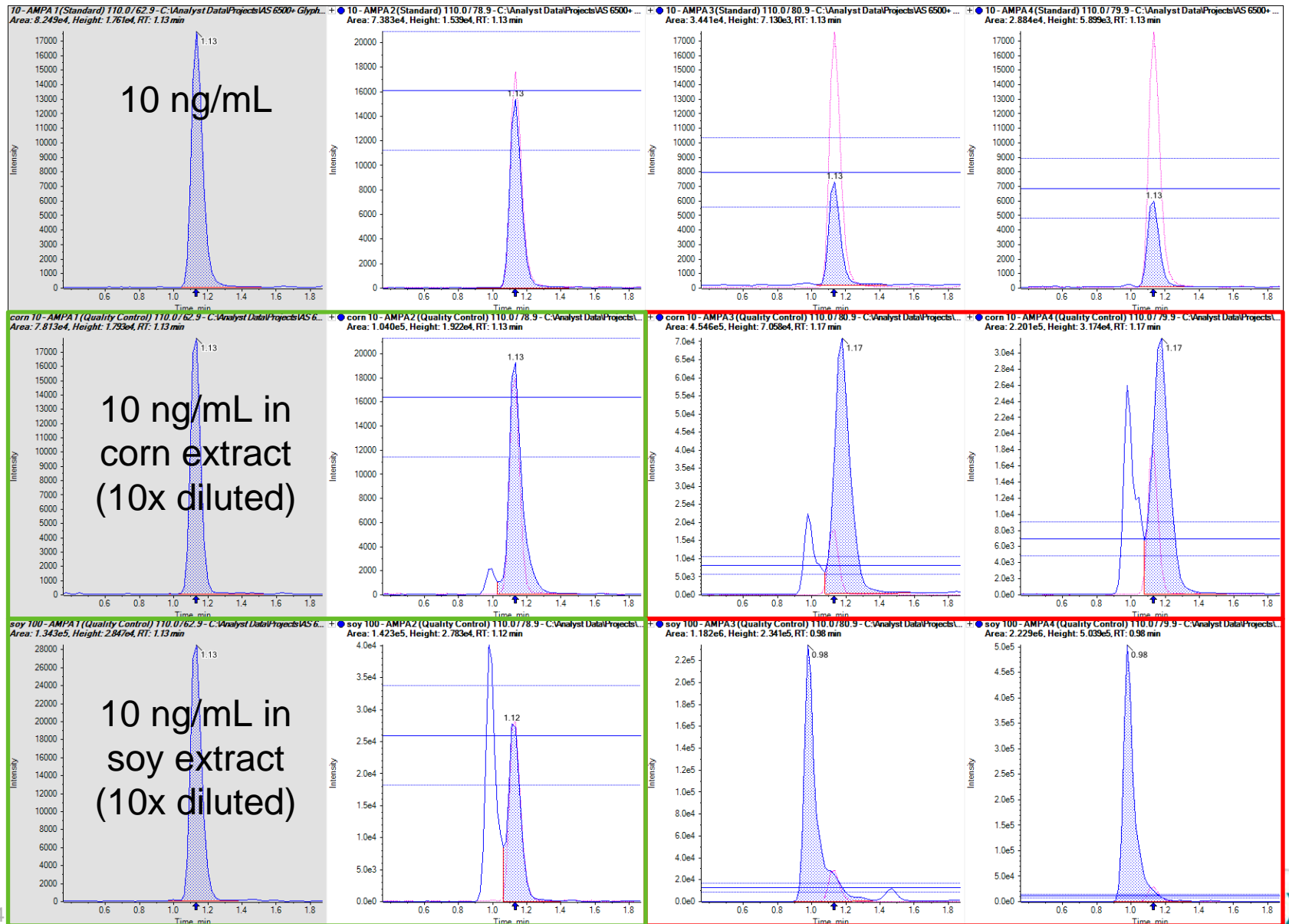
Good separation of compounds to use the *Scheduled* MRM™ algorithm



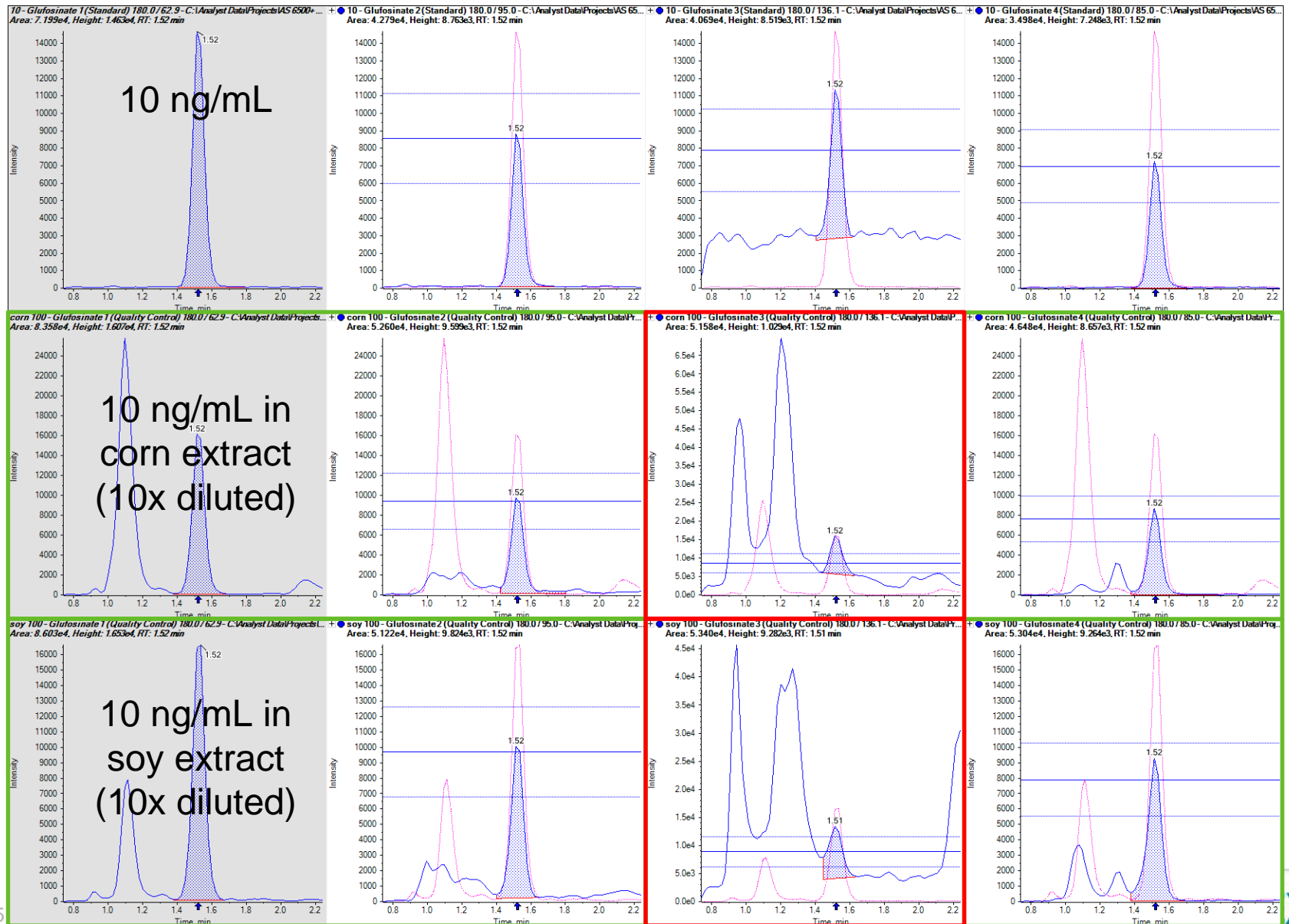
# Method 2 Performance – Glyphosate



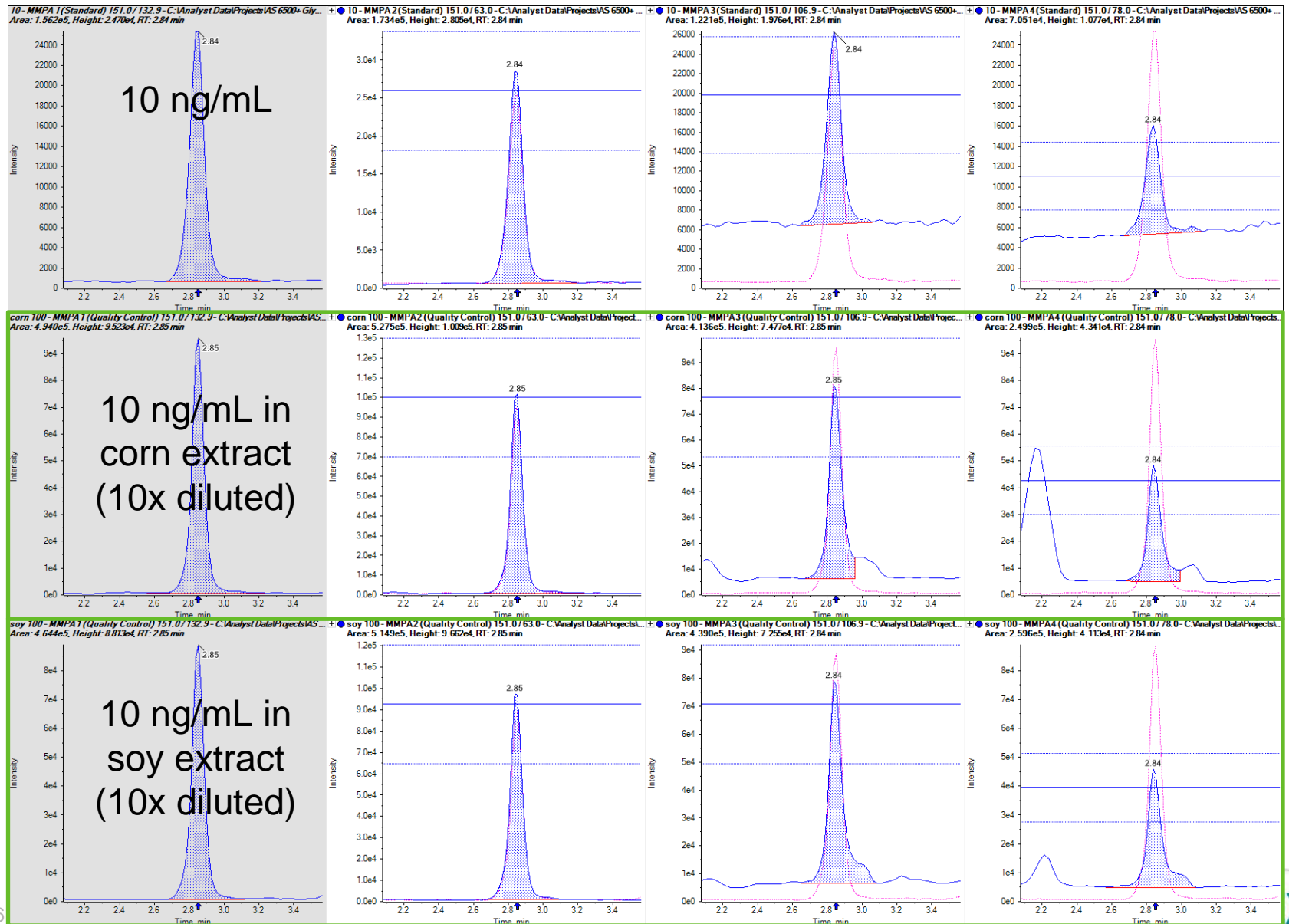
# Method 2 Performance – AMPA



# Method 2 Performance – Glufosinate

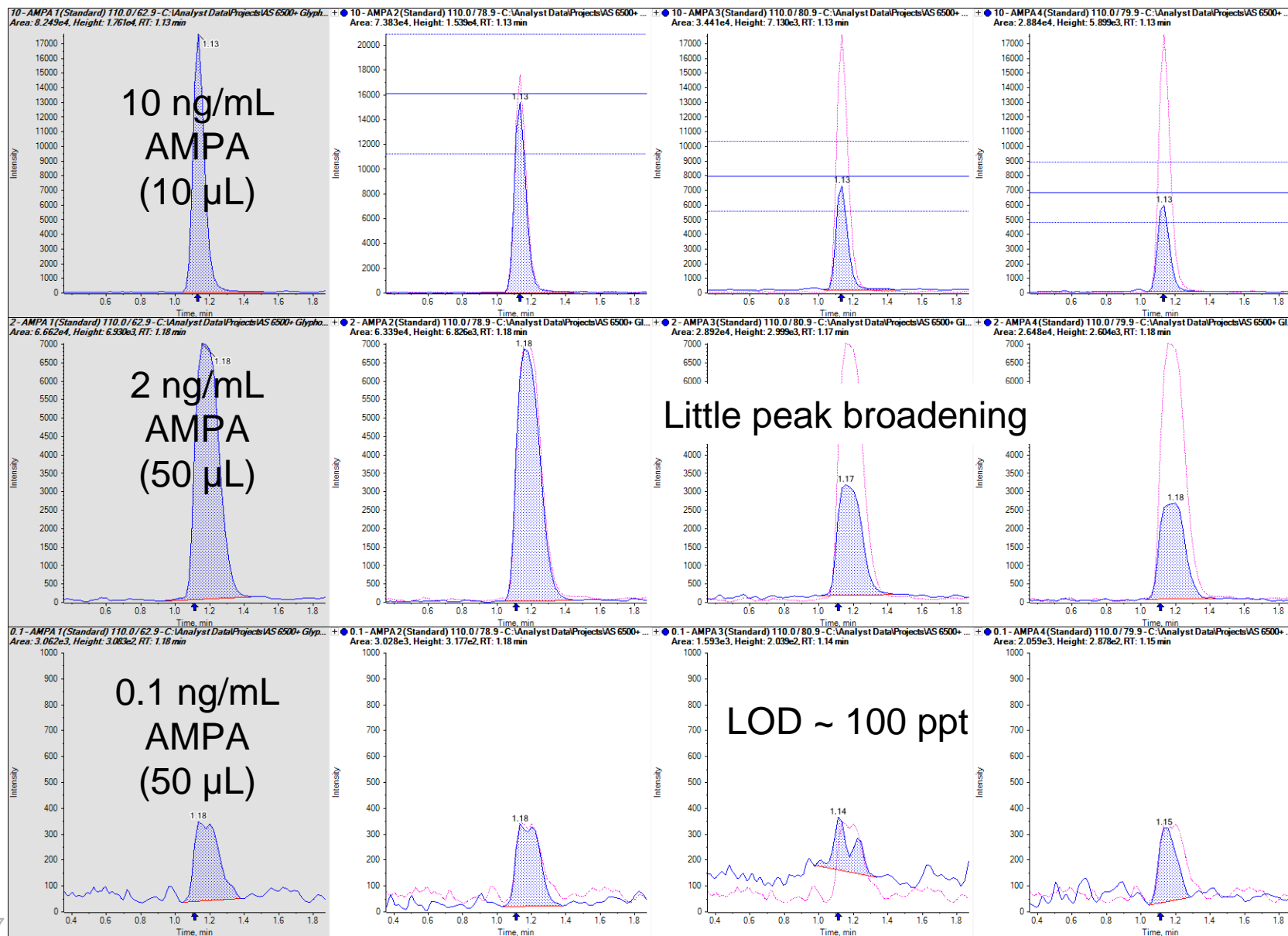


# Method 2 Performance – MMPA

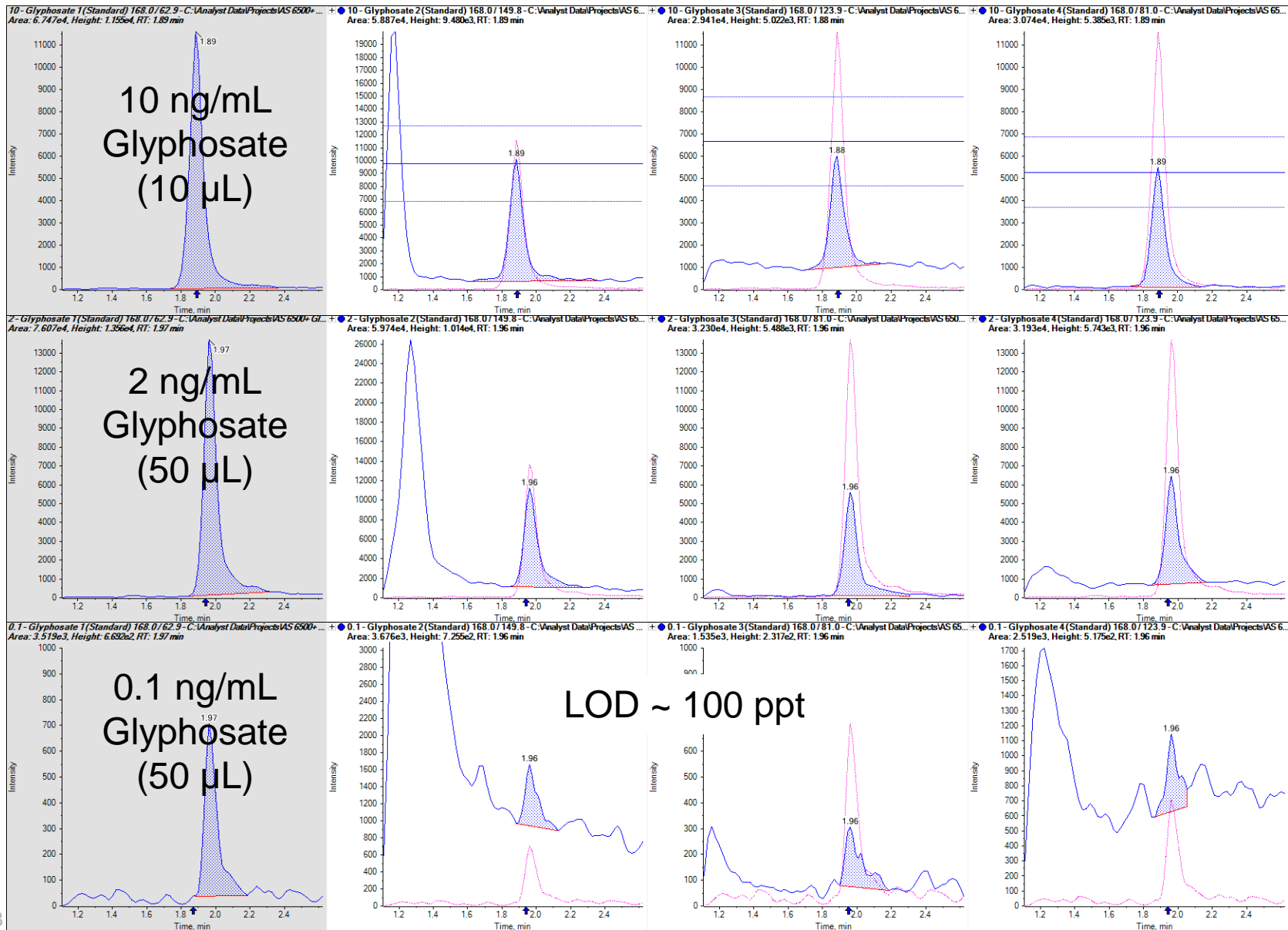




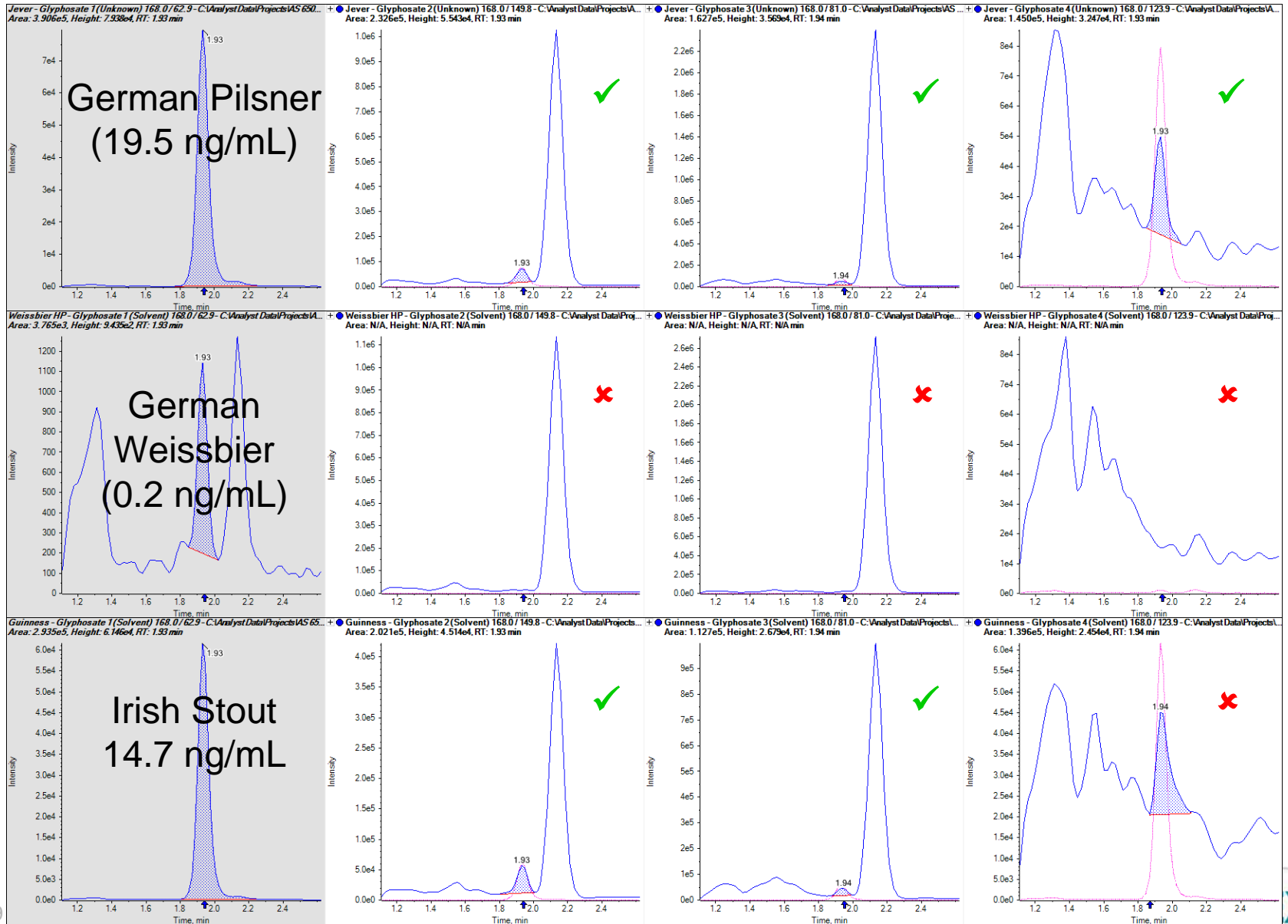
# Method 2 Performance – Large Volume Injection (50 $\mu$ L)



# Method 2 Performance – Large Volume Injection (50 $\mu$ L)

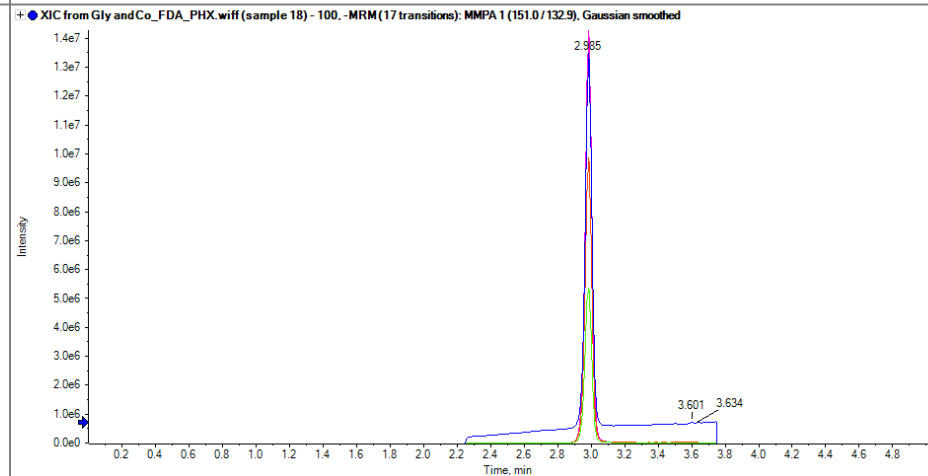
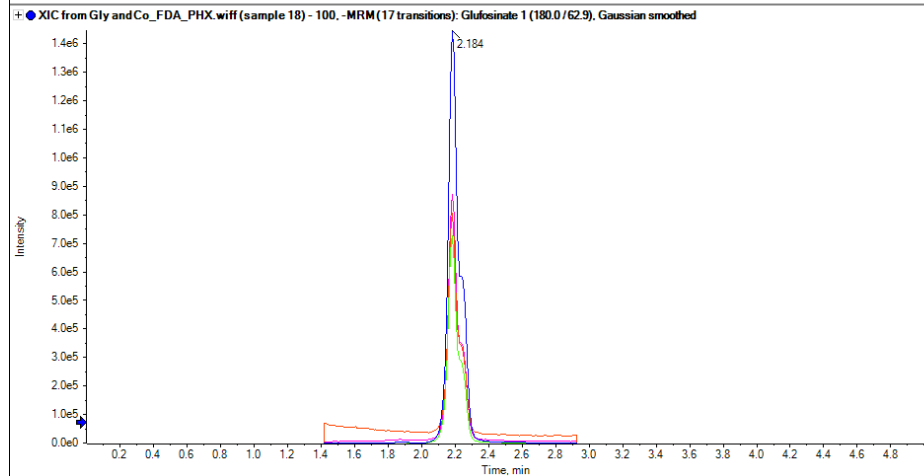
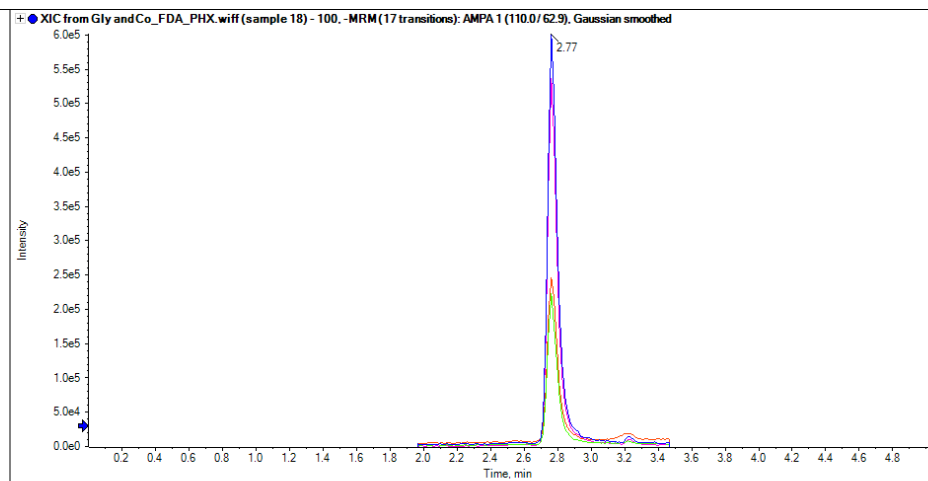
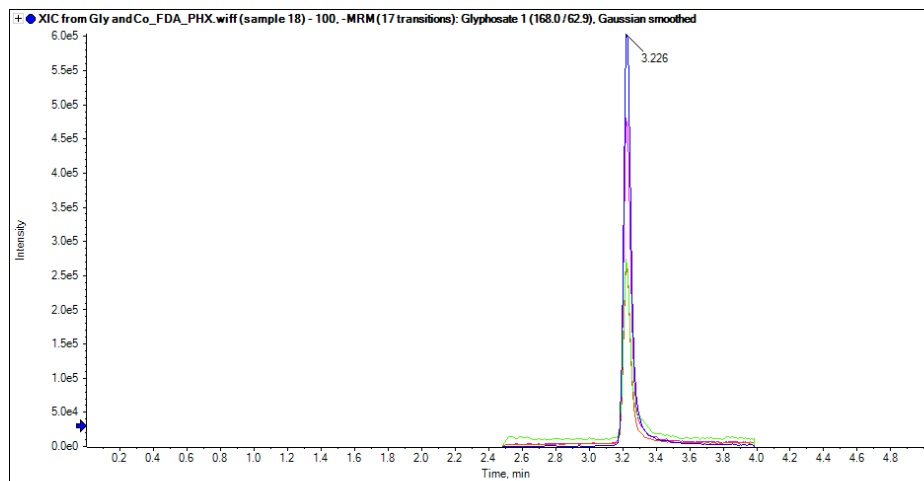


# Method 2 Performance – Glyphosate in Beer (2x Dilution)



# Method 3 (LUNA NH2 ammonium bicarbonate pH=10)

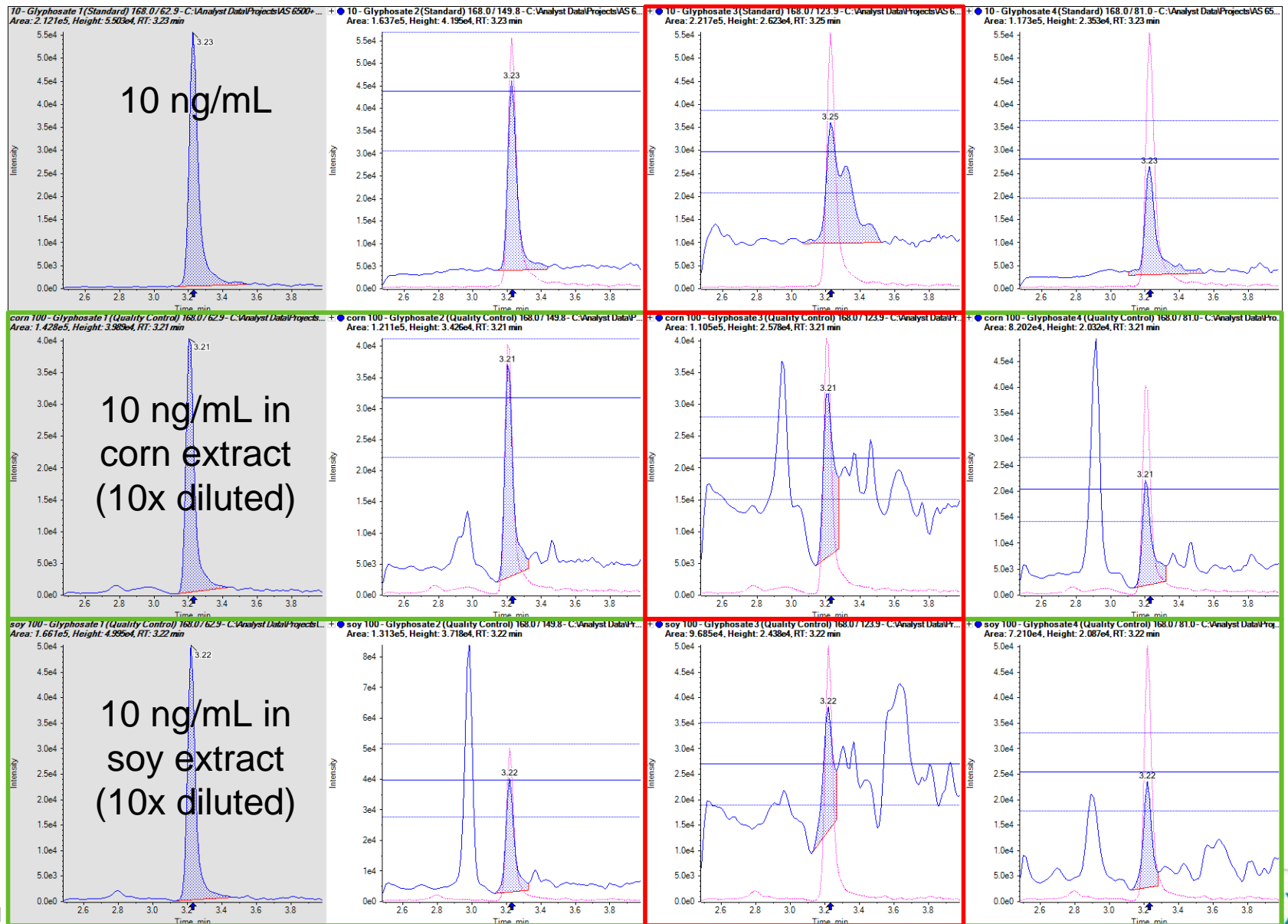
100 ng/mL Standard



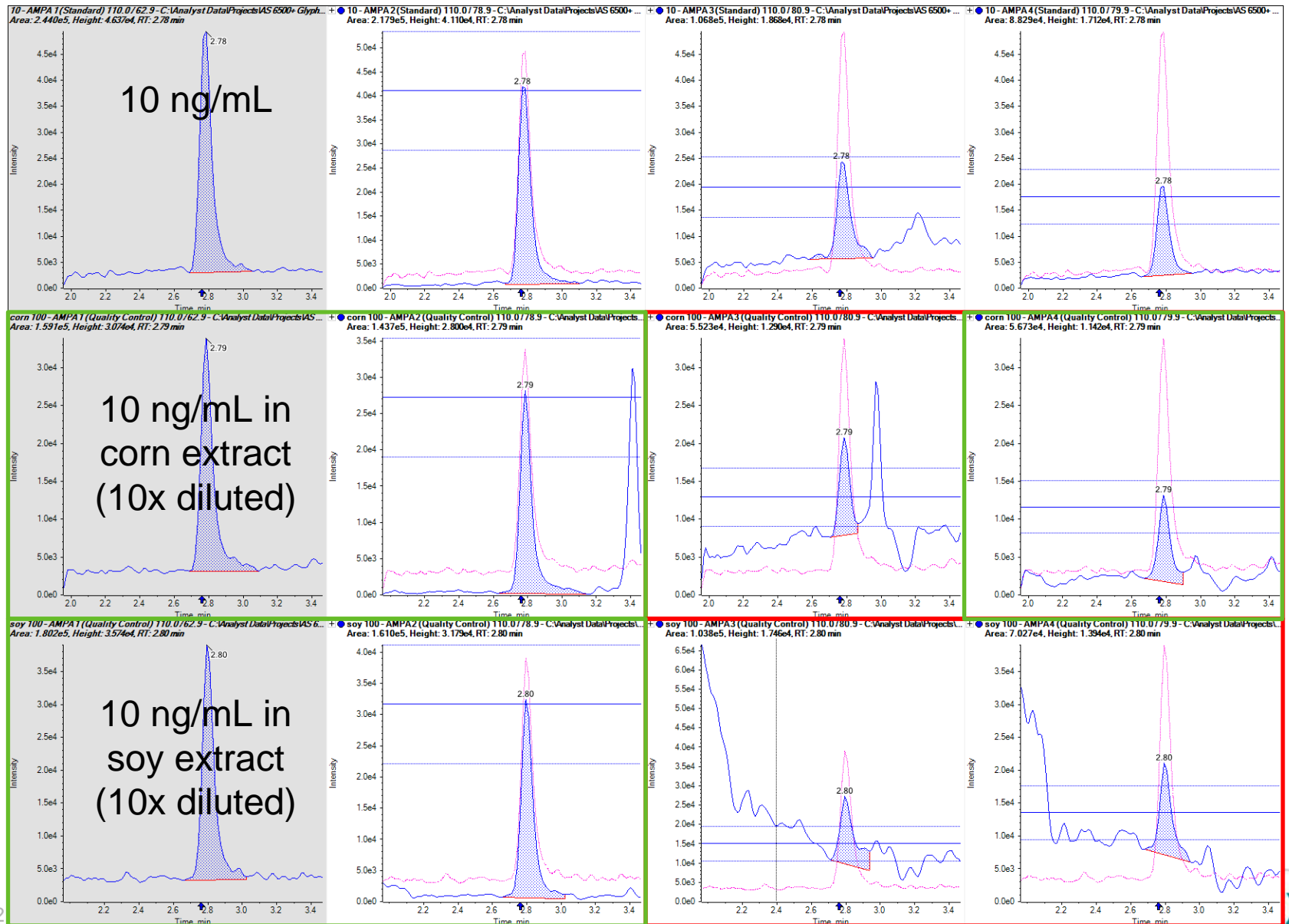
Good separation of compounds to use the *Scheduled* MRM™ algorithm



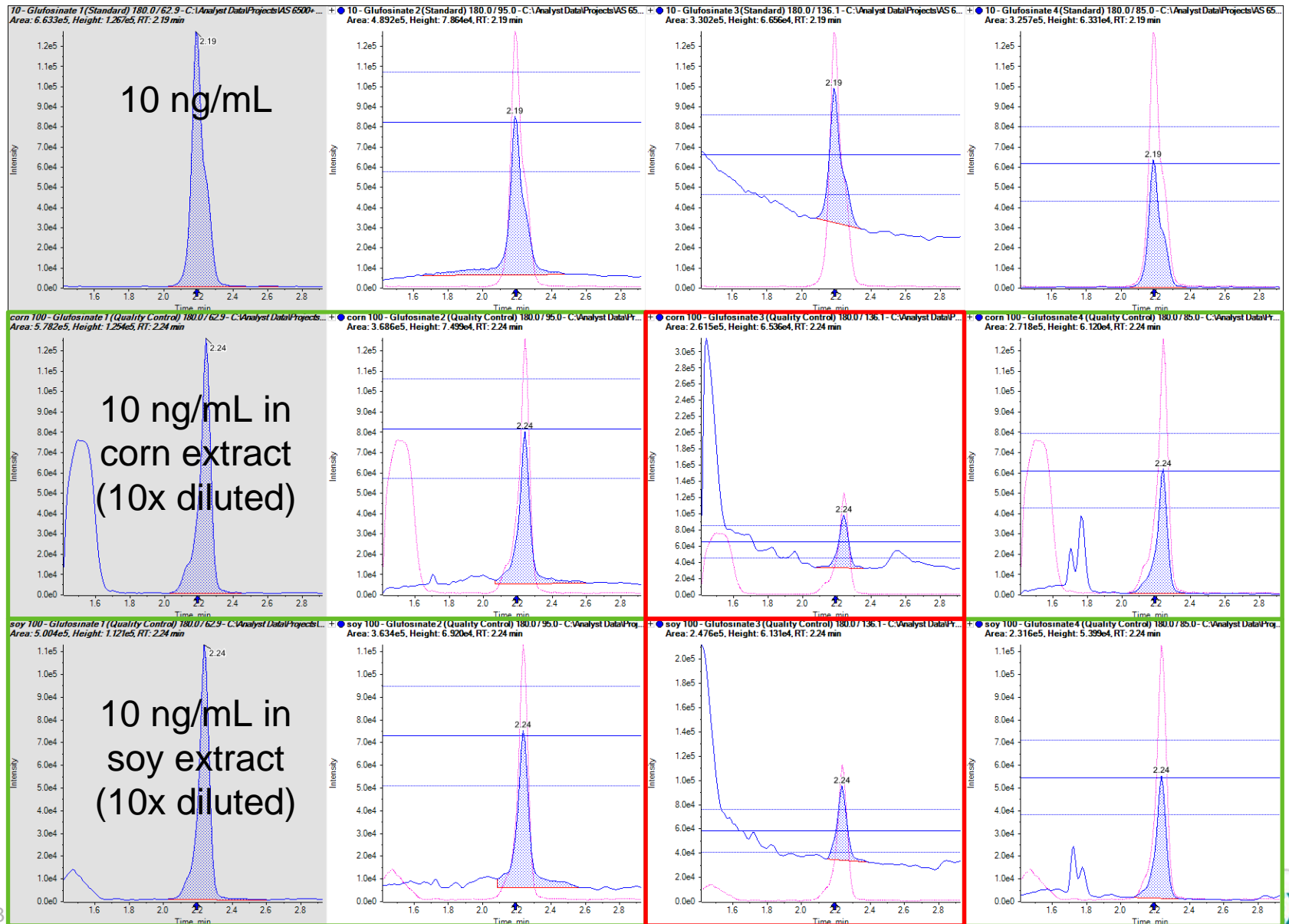
# Method 3 Performance – Glyphosate



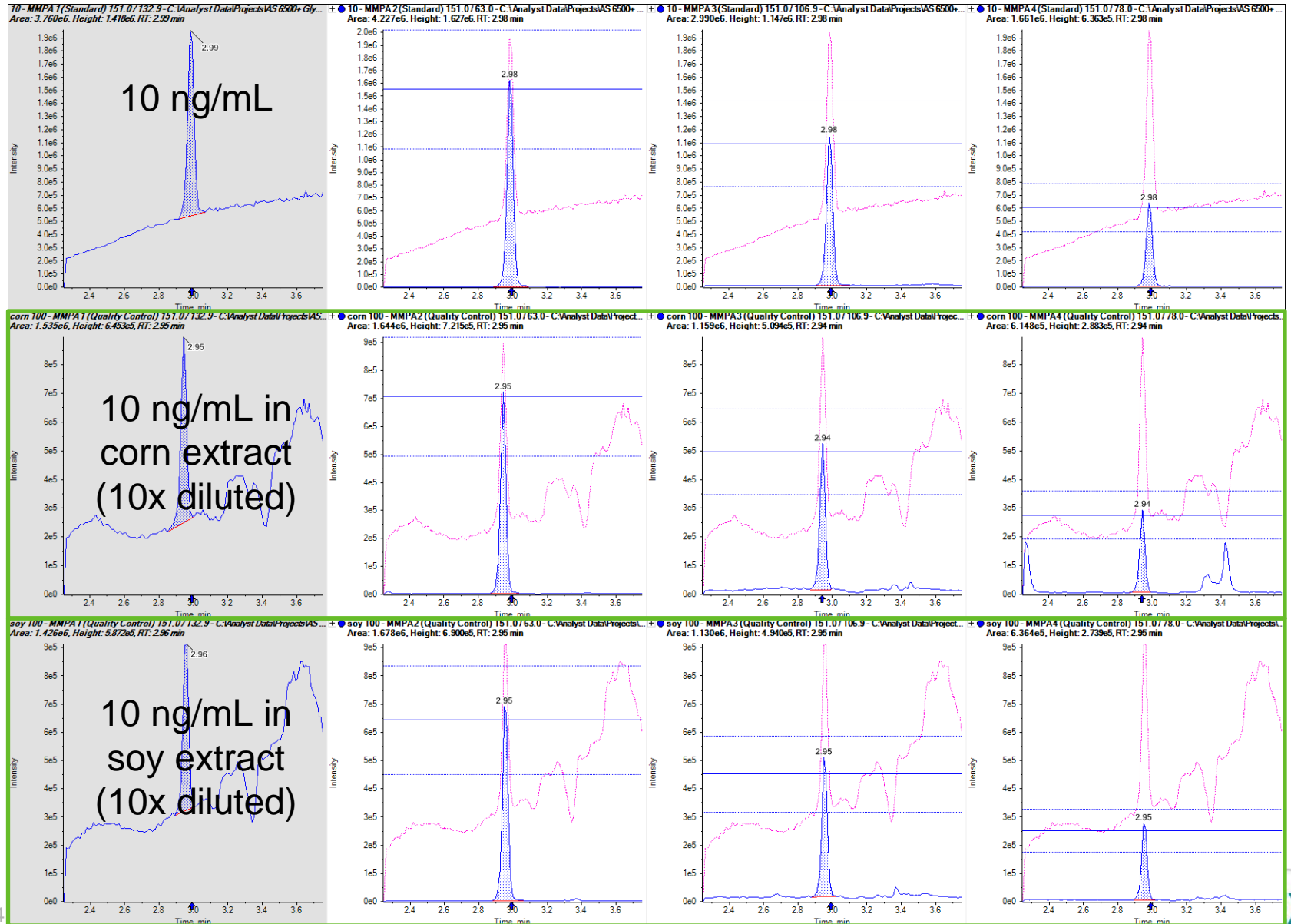
# Method 3 Performance – AMPA



# Method 3 Performance – Glufosinate



# Method 3 Performance – MMPA



# Method Comparison

	Method 1 (Hypercarb)	Method 2 (Trinity)	Method 3 (LUNA NH2)
<i>LOD Glyphosate</i>	2	<b>0.2</b>	0.2
<i>LOD AMPA</i>	0.2	<b>0.2</b>	1
<i>LOD Glufosinate</i>	0.5	<b>0.5</b>	0.5
<i>LOD MMPA</i>	0.5	<b>0.5</b>	5
<i>%CV at 10 ng/mL Glyphosate</i>	7.6%	<b>2.5%</b>	5.2%
<i>%CV at 10 ng/mL AMPA</i>	1.2%	<b>3.0%</b>	1.4%
<i>%CV at 10 ng/mL Glufosinate</i>	1.6%	<b>2.8%</b>	2.4%
<i>%CV at 10 ng/mL MMPA</i>	0.8%	<b>1.2%</b>	3.8%
<i>#MRM at 10 ng/mL Glyphosate</i>	2	<b>4</b>	3
<i>#MRM at 10 ng/mL AMPA</i>	4	<b>4</b>	4
<i>#MRM at 10 ng/mL Glufosinate</i>	4	<b>4</b>	4
<i>#MRM at 10 ng/mL MMPA</i>	4	<b>4</b>	4
<i>LC peak shape</i>	poor for glyphosate	<b>very good</b>	very good
<i>RT stability</i>	ok	<b>Very good</b>	long term (pH=10)?
<i>Matrix interferences</i>	many	<b>few</b>	few + high background
<i>Potential for LVI (100 ppt in water)</i>	not tested	<b>yes</b>	peak broadening
<i>Ease to setup</i>	most challenging	<b>yes</b>	yes





## Application Data

– Glyphosate, AMPA, Glufosinate and MMPA in Foods –



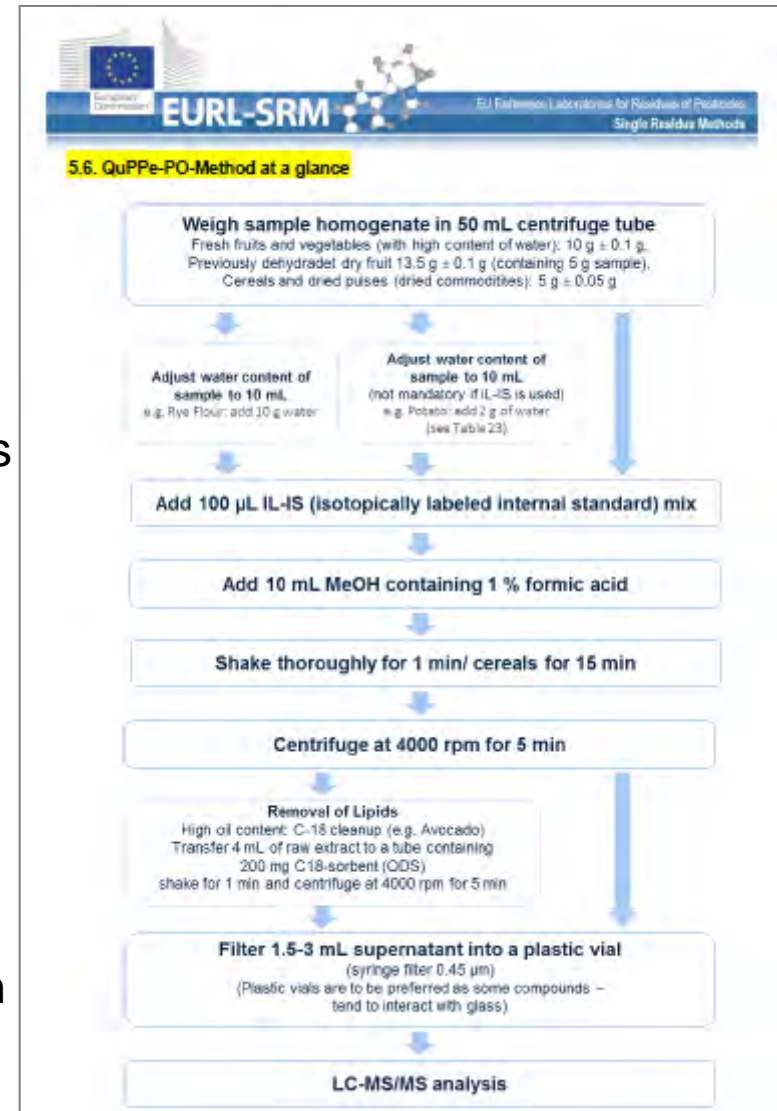
SCIEX ExionLC™ AC system



QTRAP® 6500+ system

# Experimental

- QuPPE extraction
  - 10 g of sample
  - Adjust water content to 10 mL
  - (Add internal standard)
  - Add 10 mL methanol + 1% formic acid
  - Extraction + centrifugation
  - (Lipid removal for high oil content samples using C18 dSPE)
  - Dilution with water (10x)
- LC separation (ExionLC™ AC)
  - Acclaim Trinity Q1 100 x 3 mm 3µm
  - Gradient of water + 50 mM ammonium formate/formic acid (pH=2.9) and acetonitrile at flow rate 0.5 mL/min
  - 3 min 100% A and 3 min acetonitrile wash
  - Injection of 10 - 50 µL



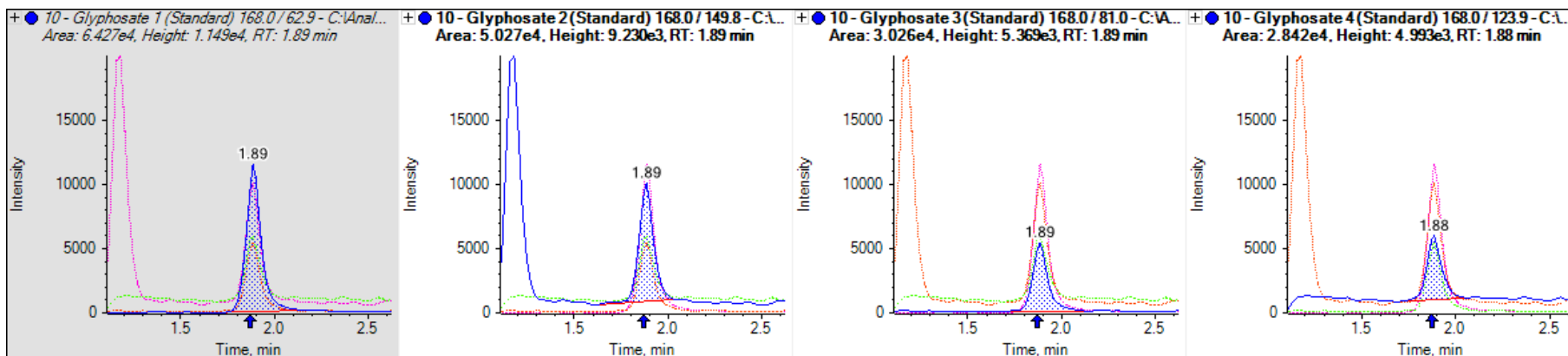
# Experimental

- MS/MS detection using QTRAP<sup>®</sup> 6500+ system
  - IonDrive<sup>™</sup> Turbo V source with ESI probe (negative polarity)
  - IS -4500V, CUR 30 psi, Gas1 50 psi, Gas2 70 psi, CAD high, TEM 700°C
  - *Scheduled* MRM<sup>™</sup> algorithm (Q3 low resolution)
  - Full scan MS/MS with CE -35 V and CES 15

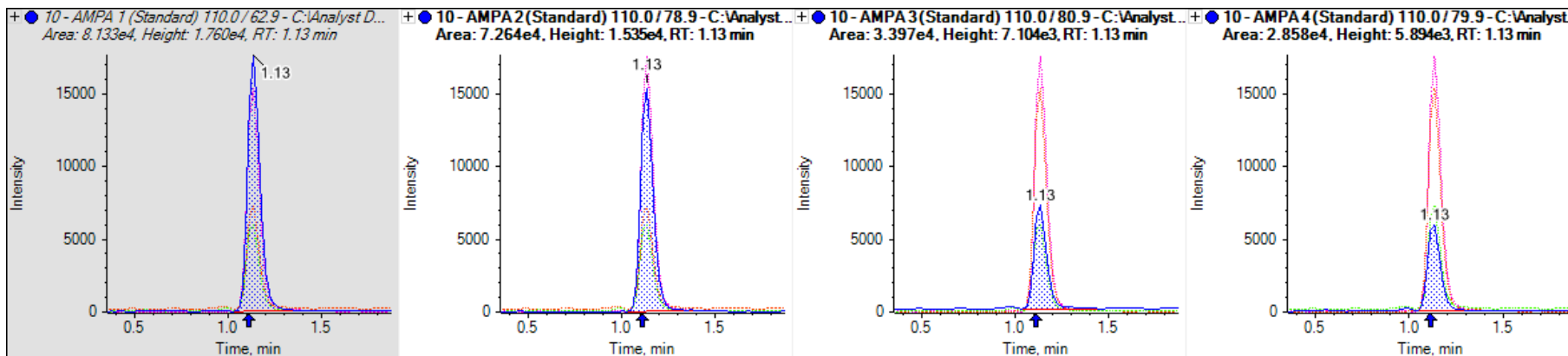
Compound	Q1 (amu)	Q3 (amu)	DP (V)	CE (V)
<i>Glyphosate</i>	168	63	-30	-26
	168	150	-30	-14
	168	124	-30	-16
	168	81	-30	-20
<i>AMPA</i>	110	63	-15	-26
	110	79	-15	-36
	110	81	-15	-16
	110	80	-15	-24
<i>Glufosinate</i>	180	63	-50	-66
	180	95	-50	-24
	180	136	-50	-22
	180	85	-50	-24
<i>MMPA</i>	151	133	-10	-18
	151	63	-10	-44
	151	107	-10	-20
	151	78	-10	-28

# Glyphosate and AMPA at 10 ng/mL (10 $\mu$ L Injection)

Glyphosate %CV = 2.99% (n = 5)

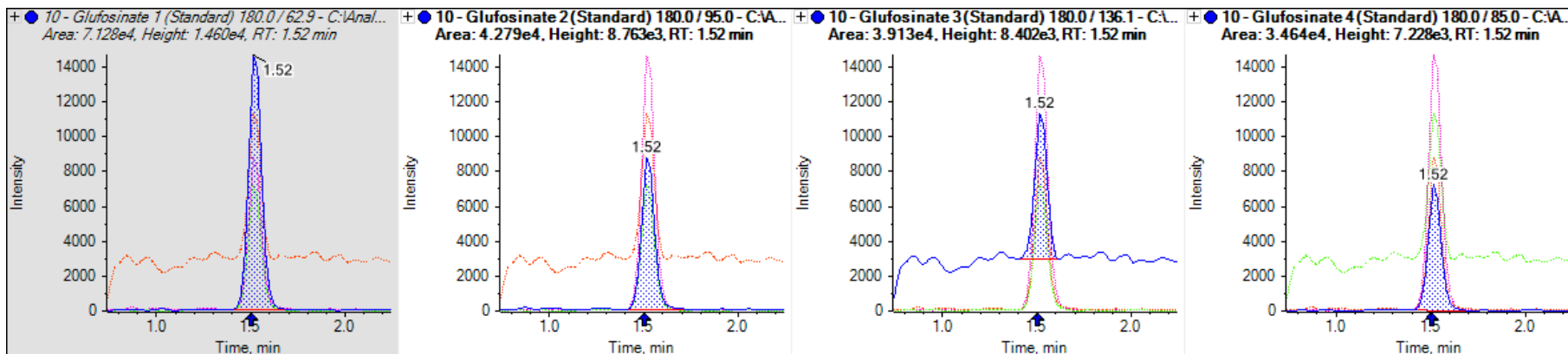


AMPA %CV = 2,85% (n = 5)

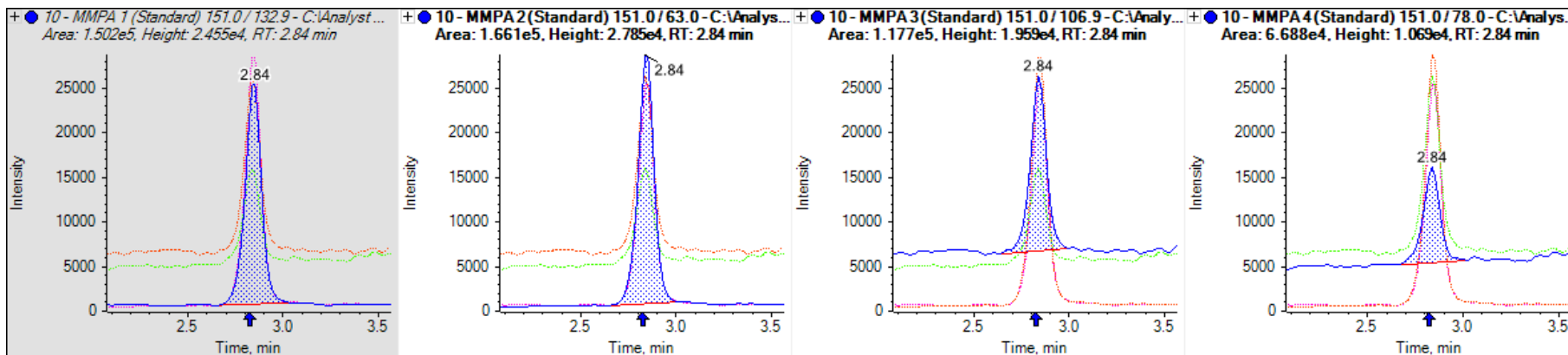


# Glufosinate and MMPA at 10 ng/L (10 $\mu$ L Injection)

Glufosinate %CV = 3.26% (n = 5)

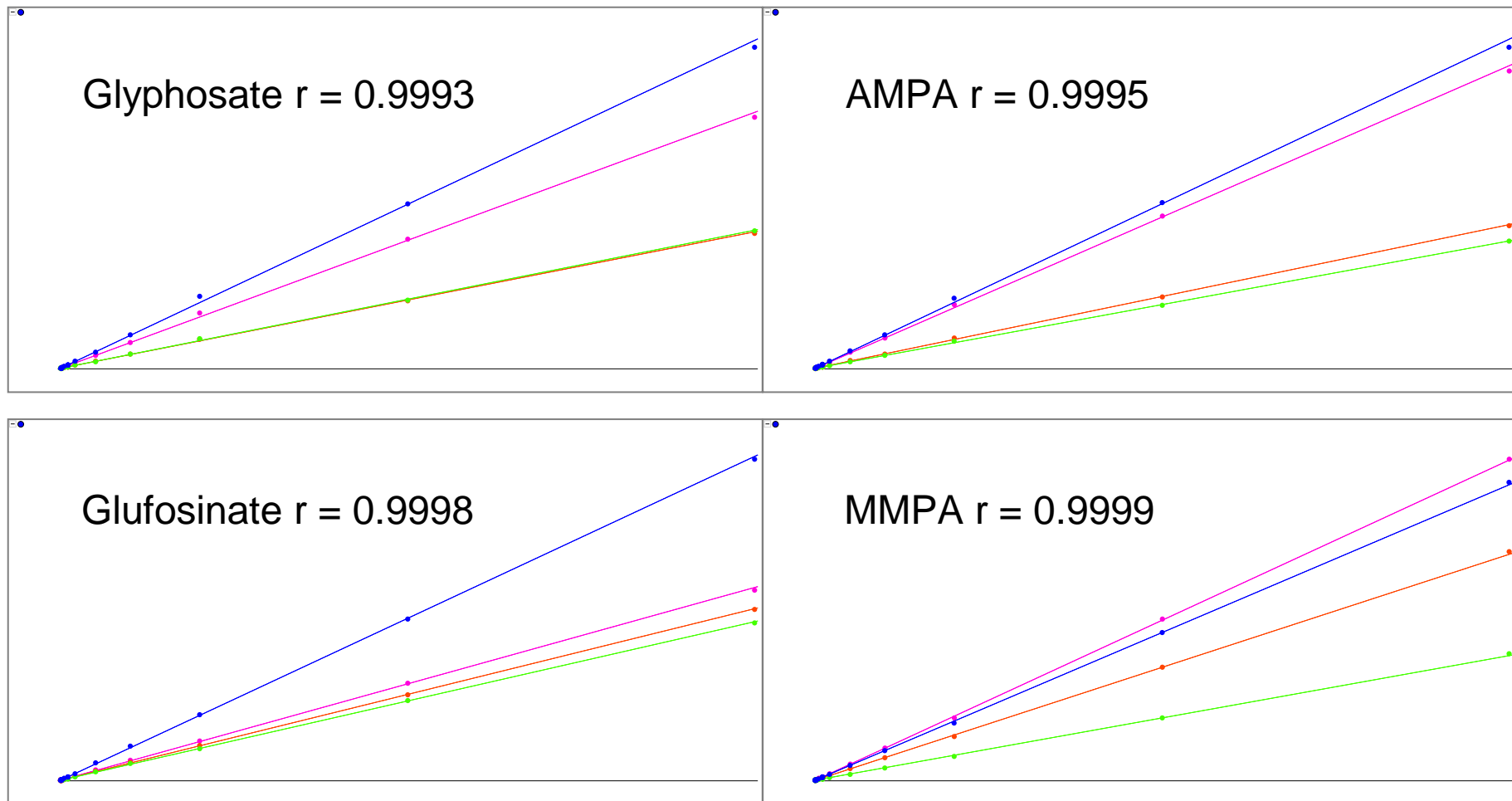


MMPA %CV = 2.39% (n = 5)



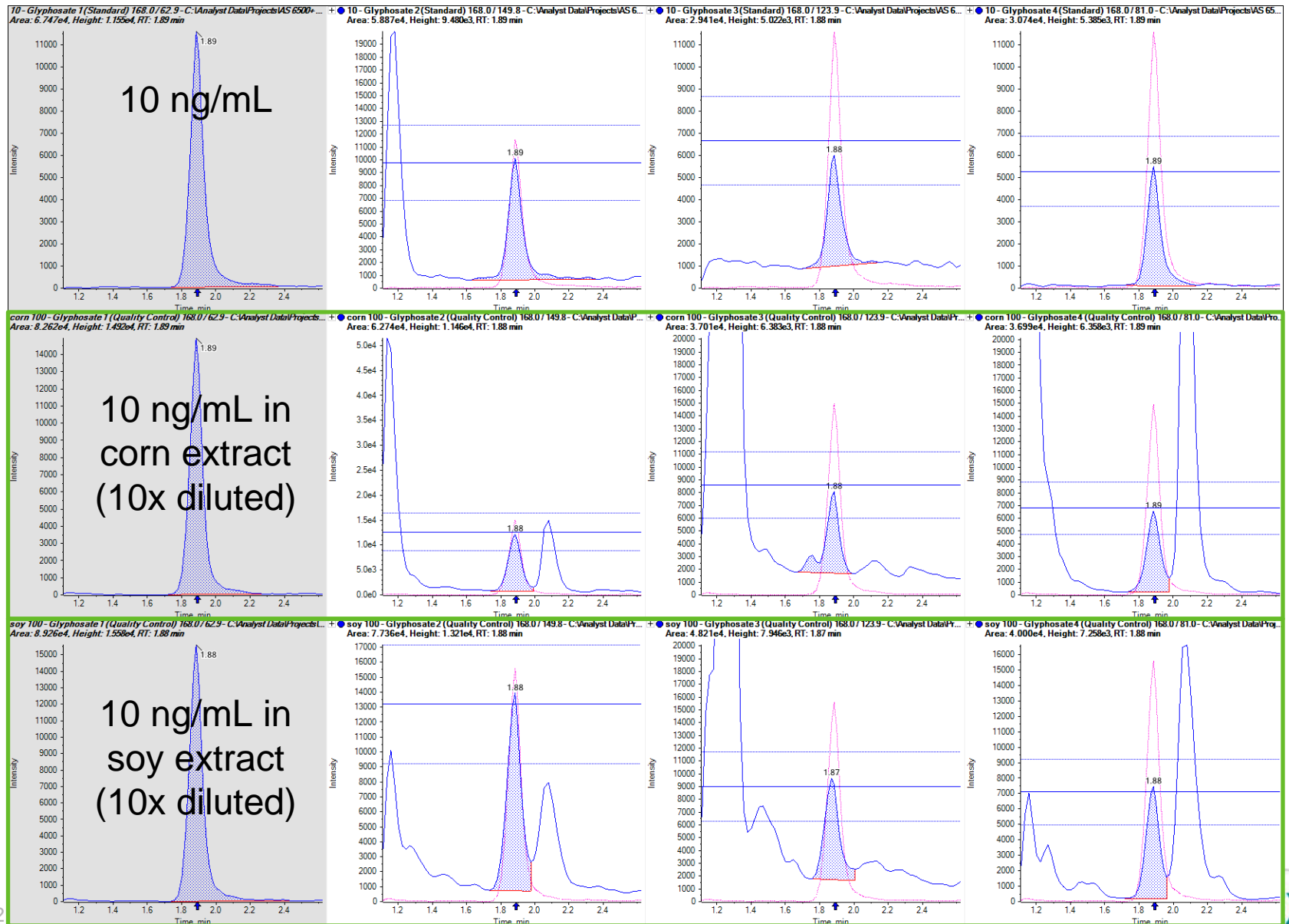


# Linear Dynamic Range 1 to 1000 ng/mL

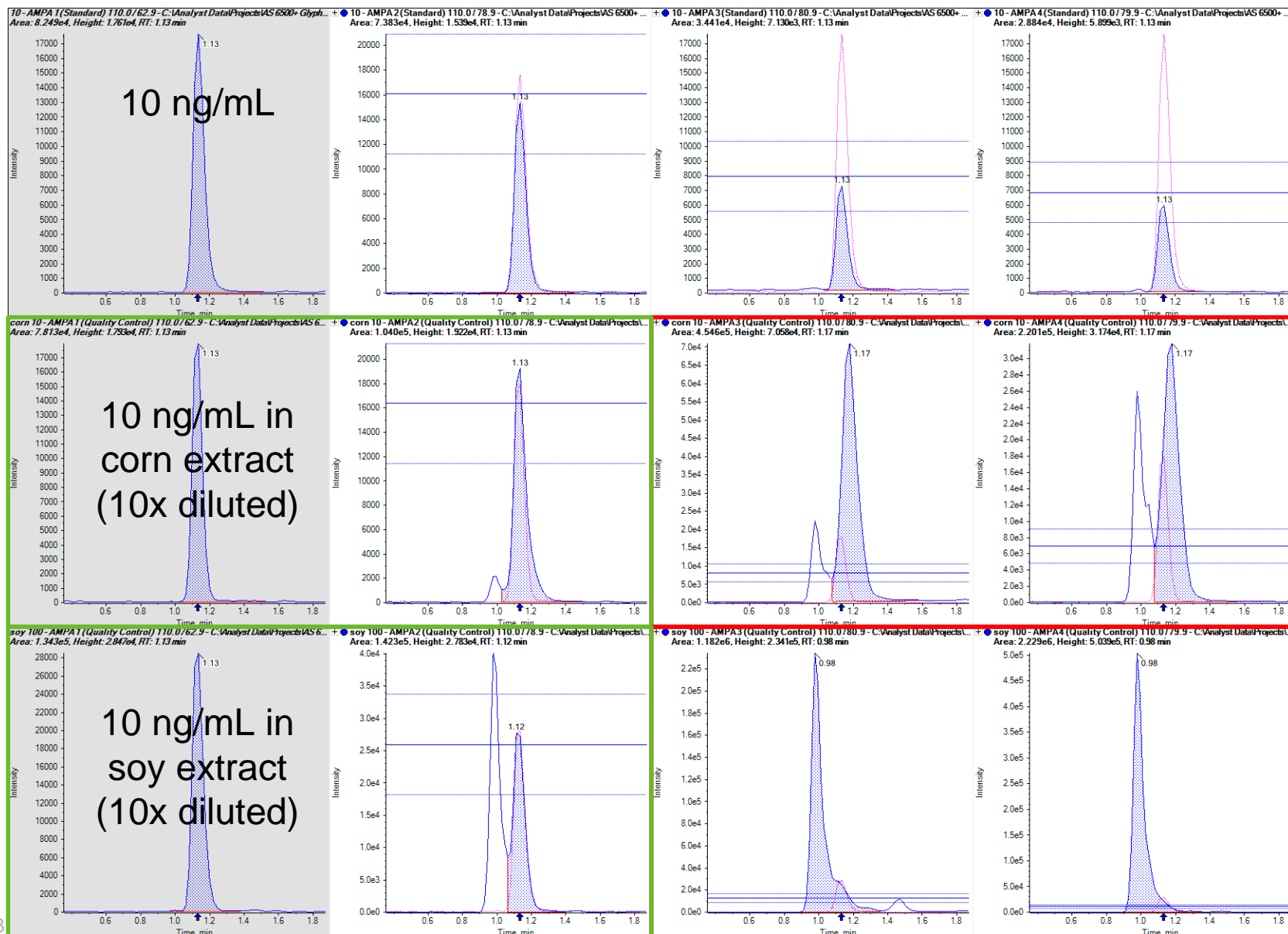


Accuracies between 80 and 120%

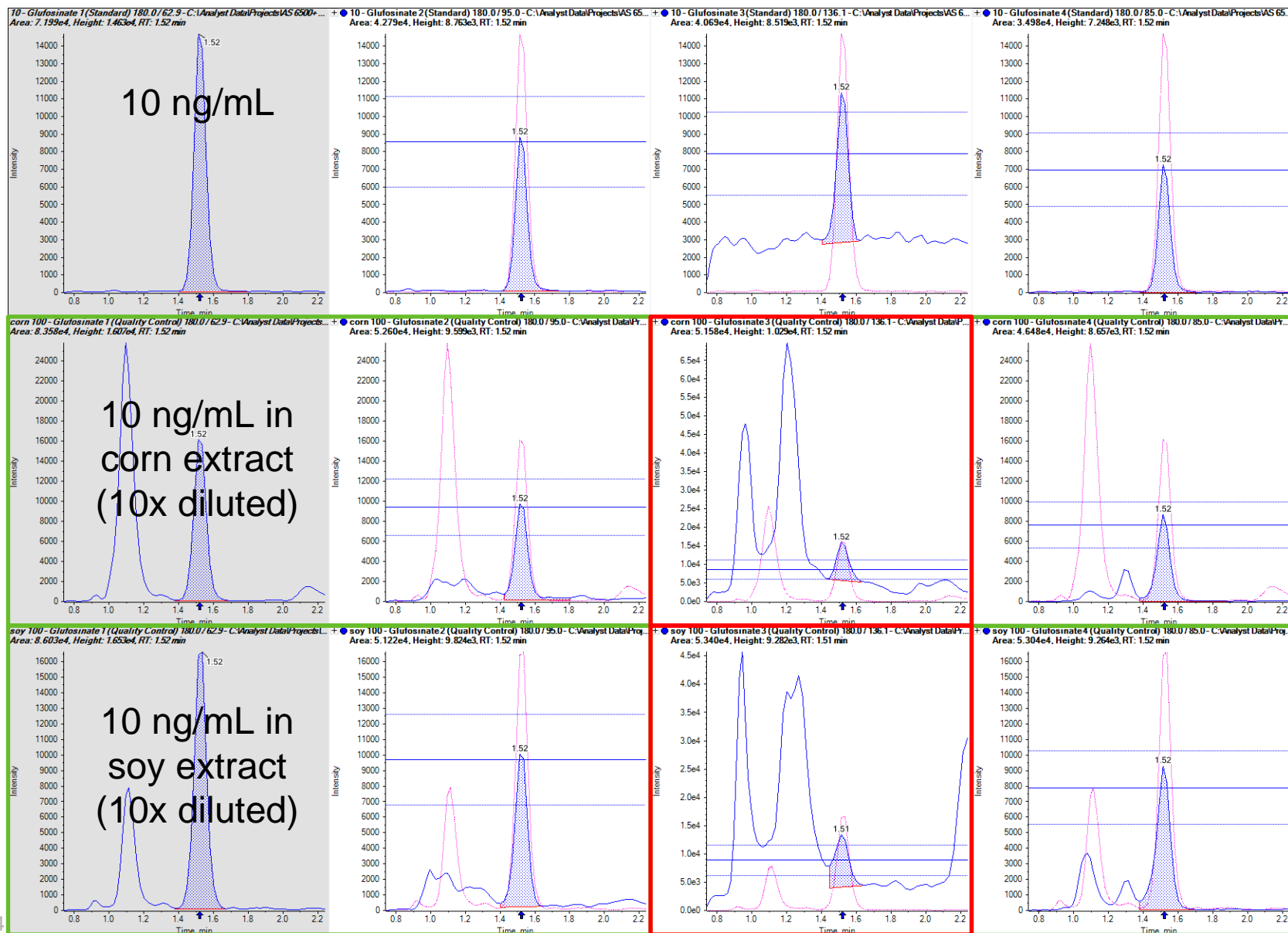
# Glyphosate in Corn and Soy Extract



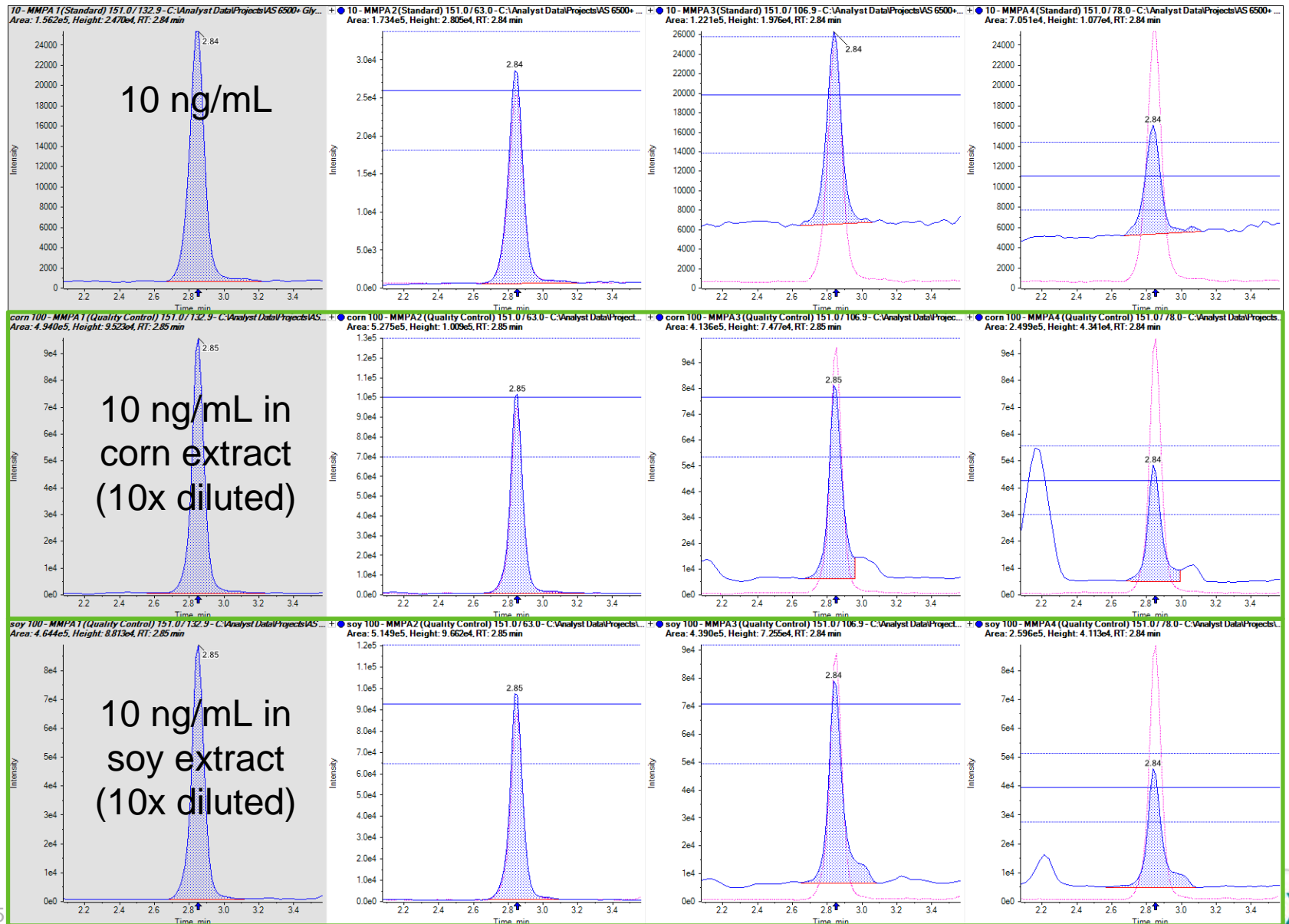
# AMPA in Corn and Soy Extract



# Glufosinate in Corn and Soy Extract



# MMPA in Corn and Soy Extract





## Application Data

### – Increasing Selectivity using SelexION® Technology – (Differential Mobility Separation)



SCIEX ExionLC™ AC system

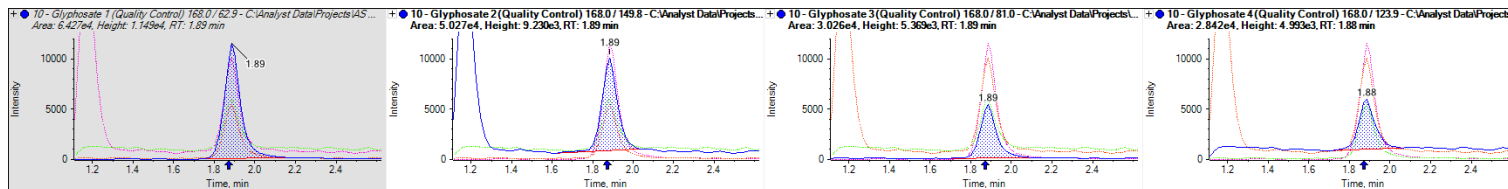


QTRAP® 6500+ system  
with SelexION®+ DMS technology

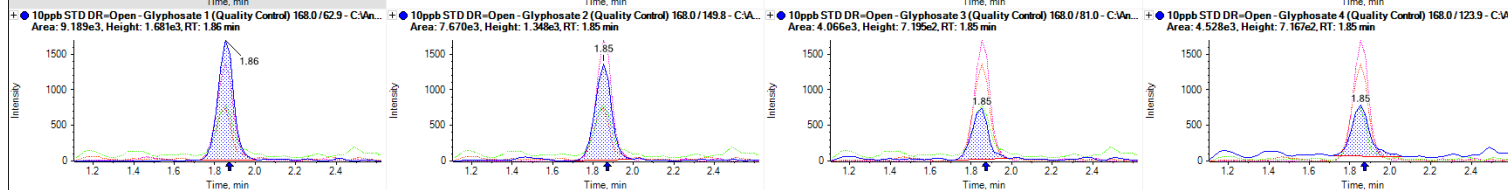
# Glyphosate with and without SelexION® DMS Technology

~7x Less Signal but Slightly Reduced Interferences and Background

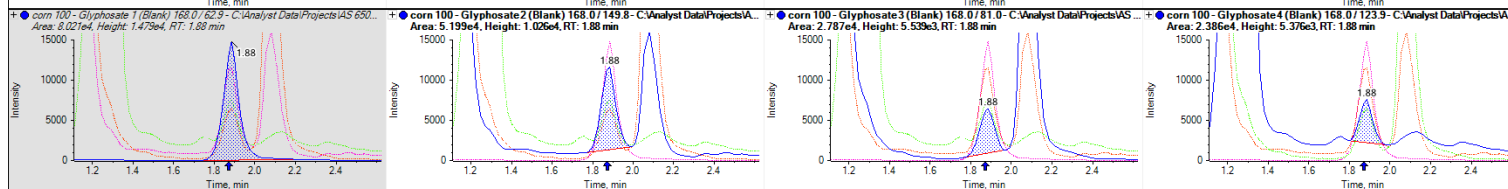
10 ng/mL  
no DMS



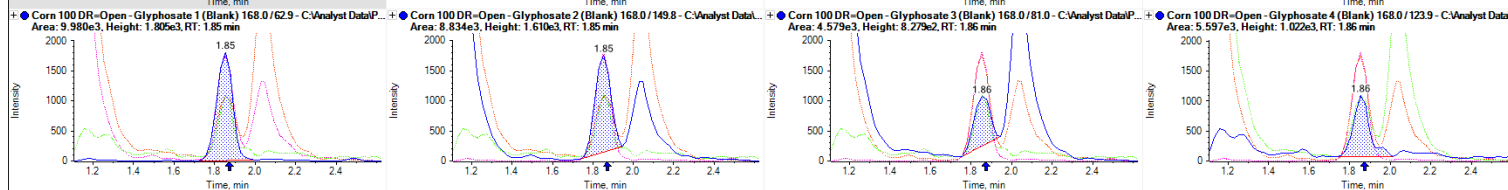
with DMS



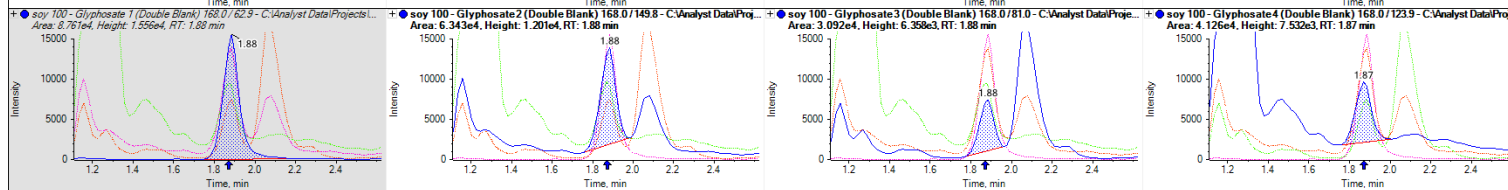
Corn  
no DMS



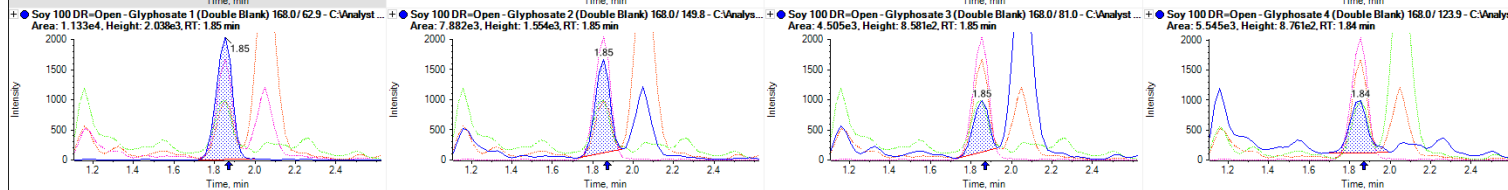
with DMS



Soy  
no DMS



with DMS



# AMPA with and without SelexION® DMS Technology

## ~11x Less Signal but Greatly Reduced Interferences and Background

10 ng/mL  
no DMS

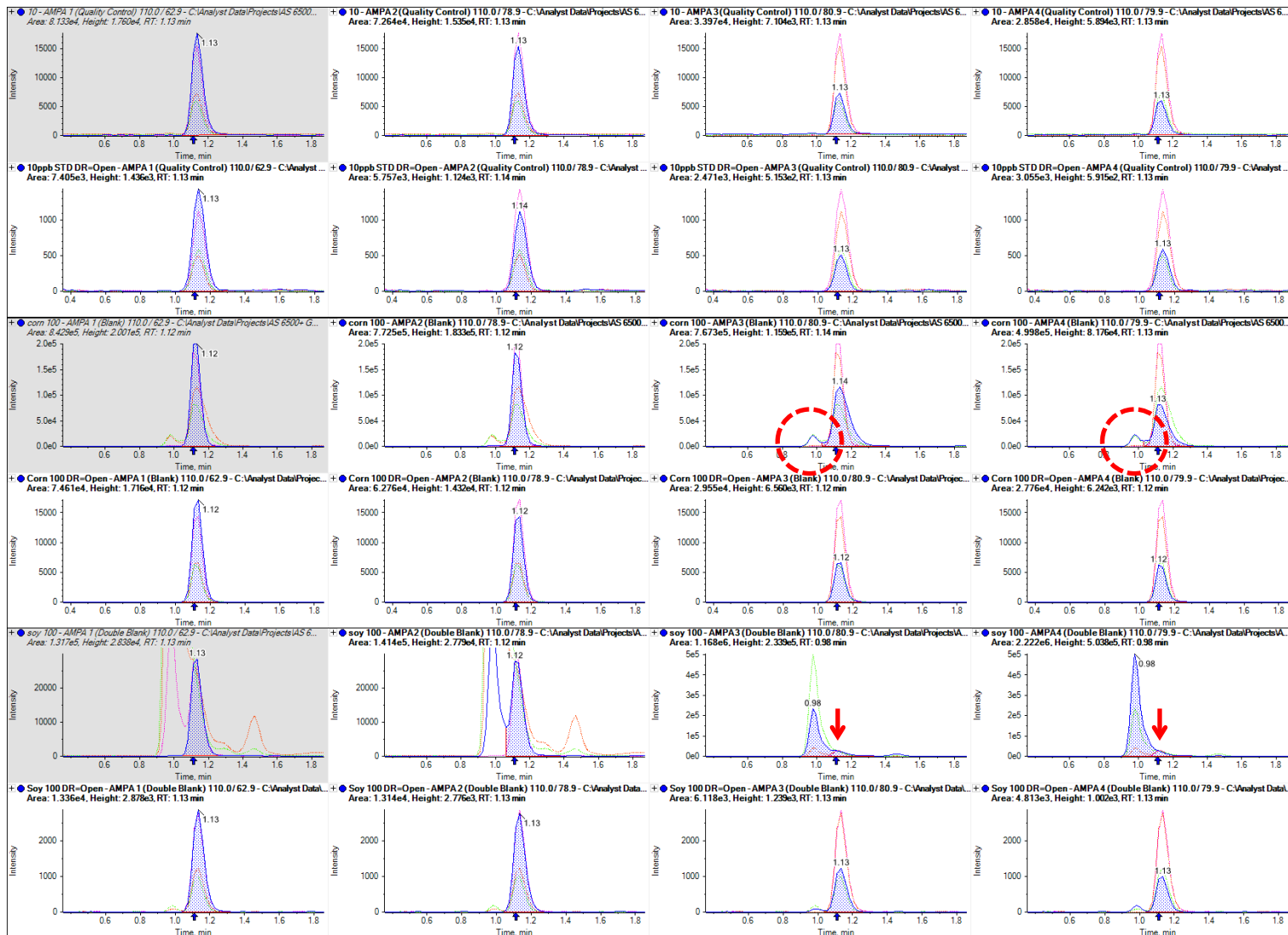
with DMS

Corn  
no DMS

with DMS

Soy  
no DMS

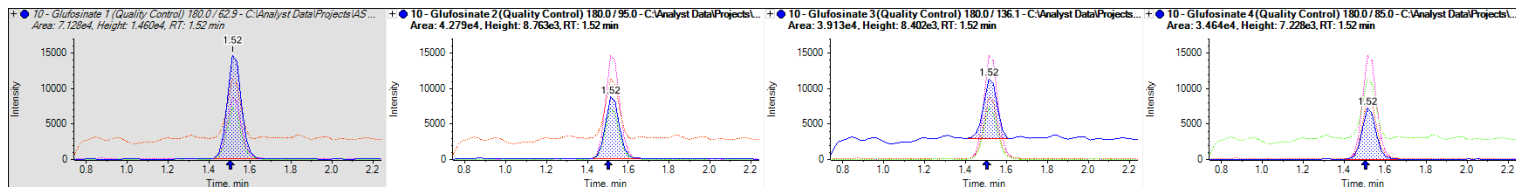
with DMS



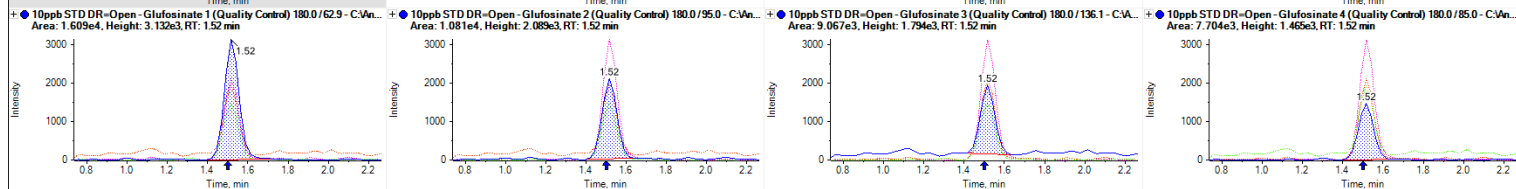
# Glufosinate with and without SelexION® DMS Technology

~4x Less Signal but Reduced Interferences and Background

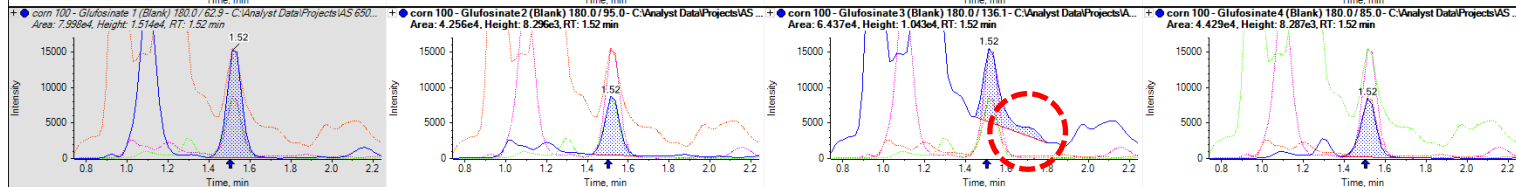
10 ng/mL  
no DMS



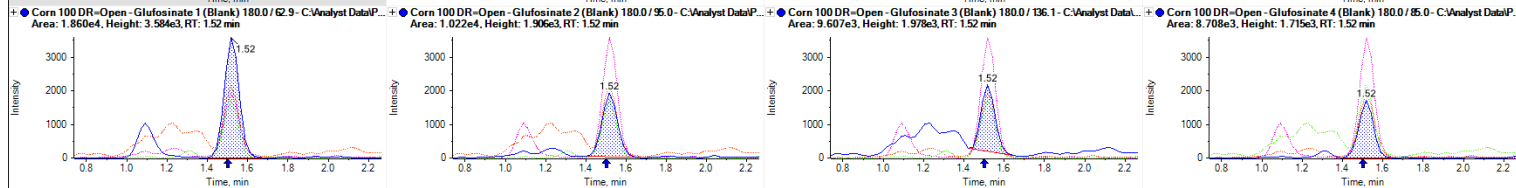
with DMS



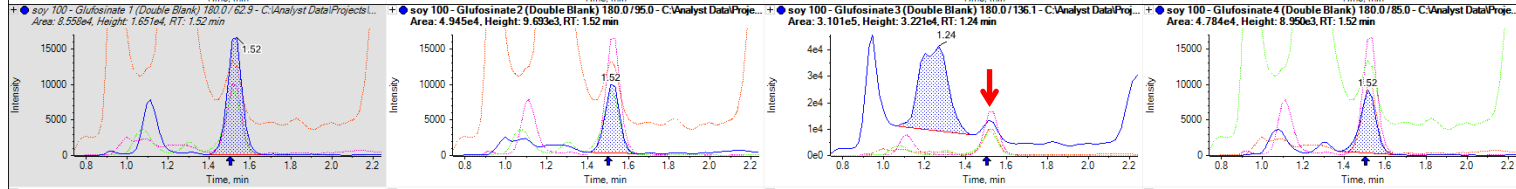
Corn  
no DMS



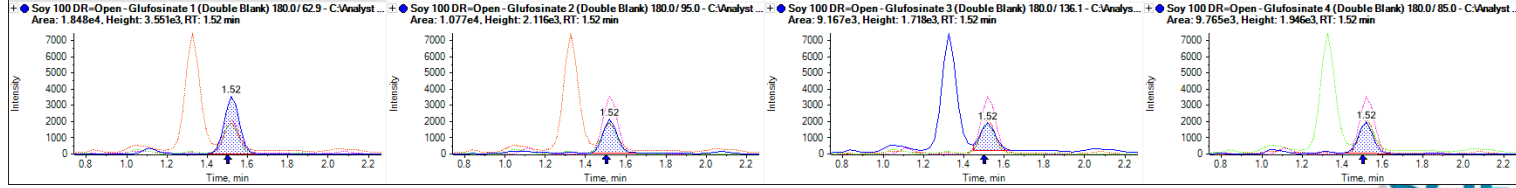
with DMS



Soy  
no DMS



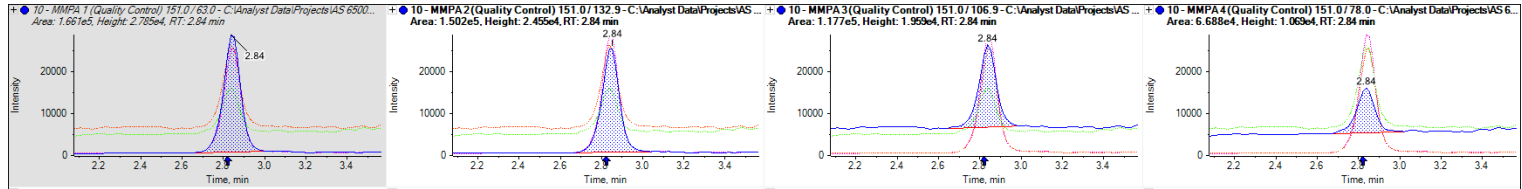
with DMS



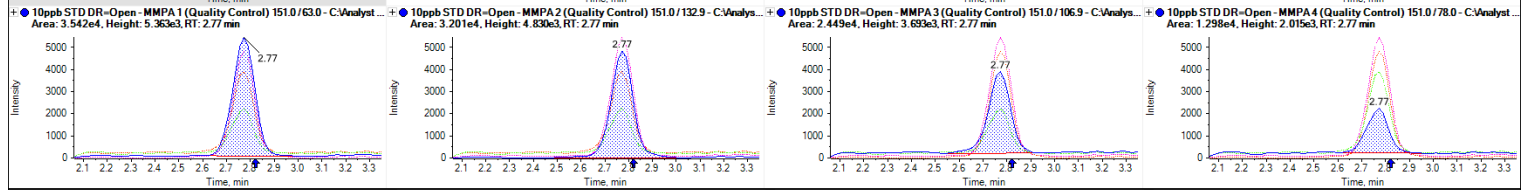
# MMPA with and without SelexION® DMS Technology

~5x Less Signal but Reduced Interferences and Background

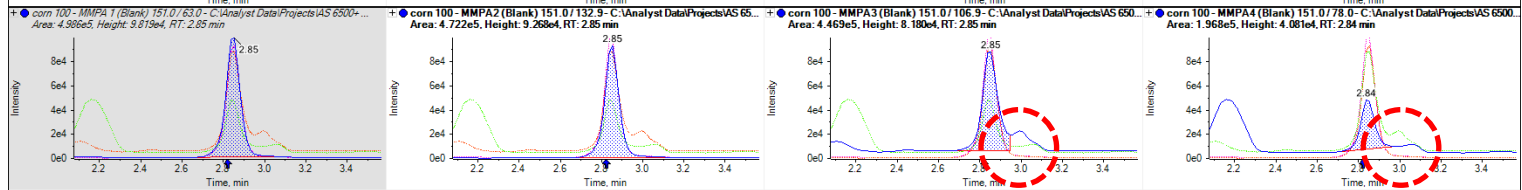
10 ng/mL  
no DMS



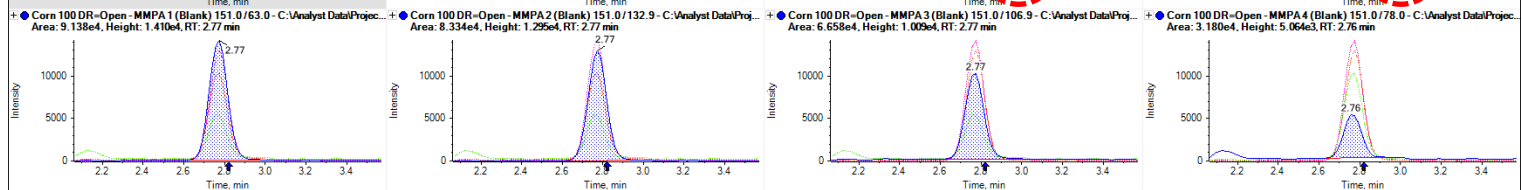
with DMS



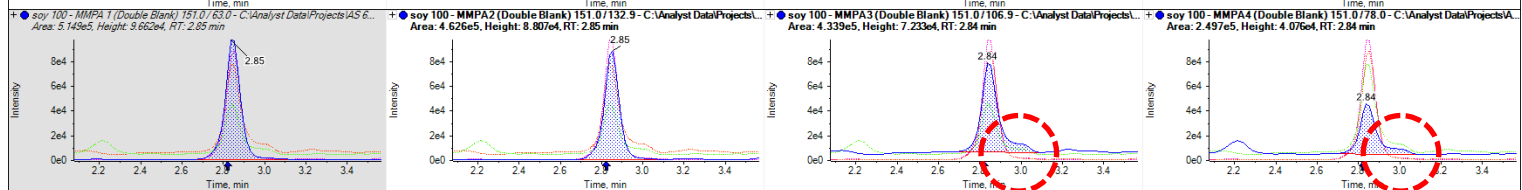
Corn  
no DMS



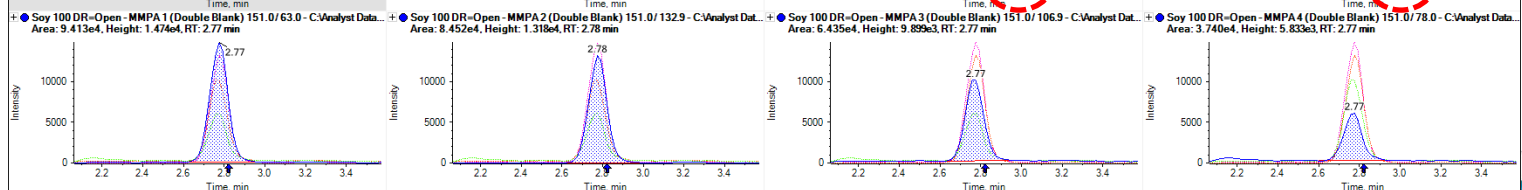
with DMS



Soy  
no DMS



with DMS





## Application Data

- **Glyphosate, AMPA, Glufosinate and MMPA in Water and Beer –**



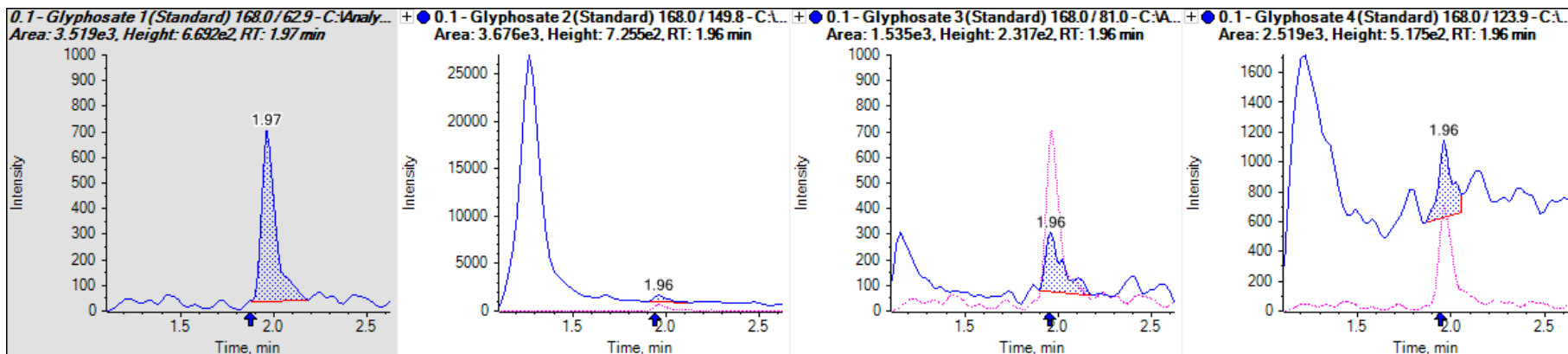
SCIEX ExionLC™ AC system



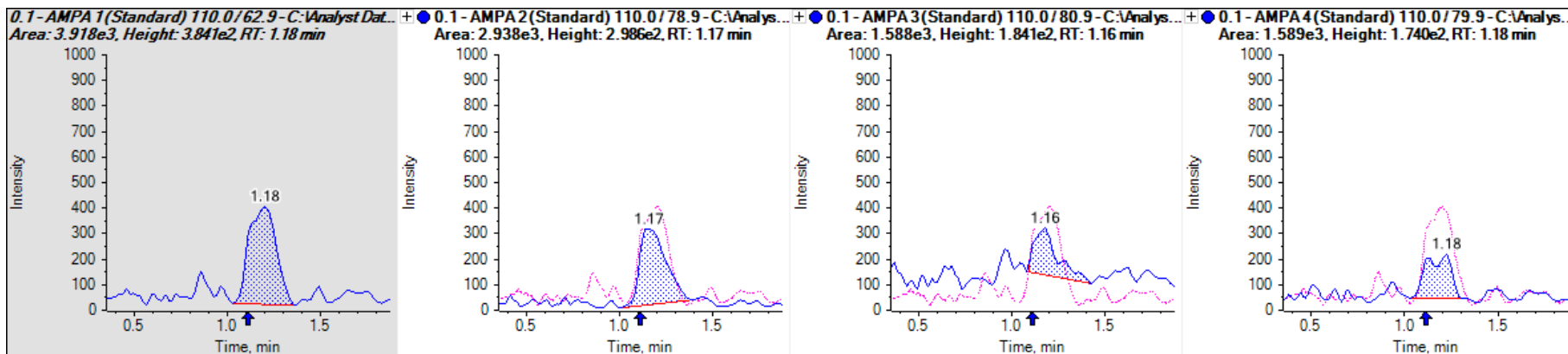
QTRAP® 6500+ system

# Glyphosate and AMPA at 100 ng/L (50 $\mu$ L Injection)

Glyphosate %CV = 3.32% (n = 5)



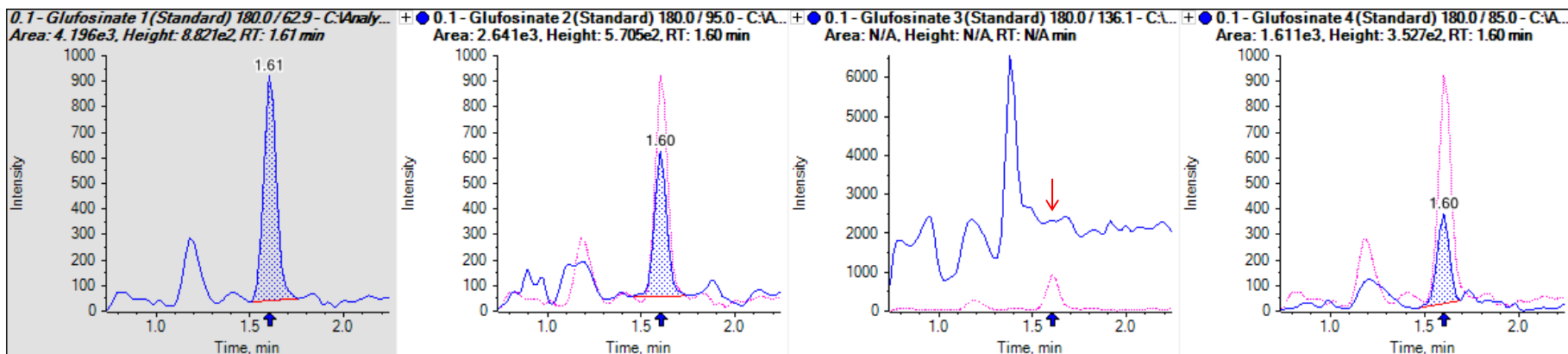
AMPA %CV = 11.4% (n = 5)



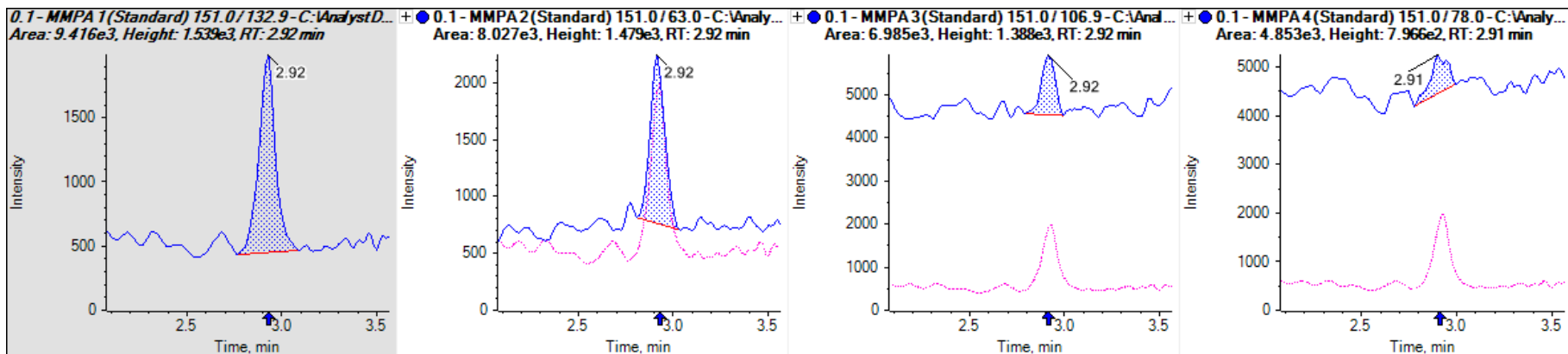
(Slight peak broadening observed for AMPA)

# Glufosinate and MMPA at 100 ng/L (50 $\mu$ L Injection)

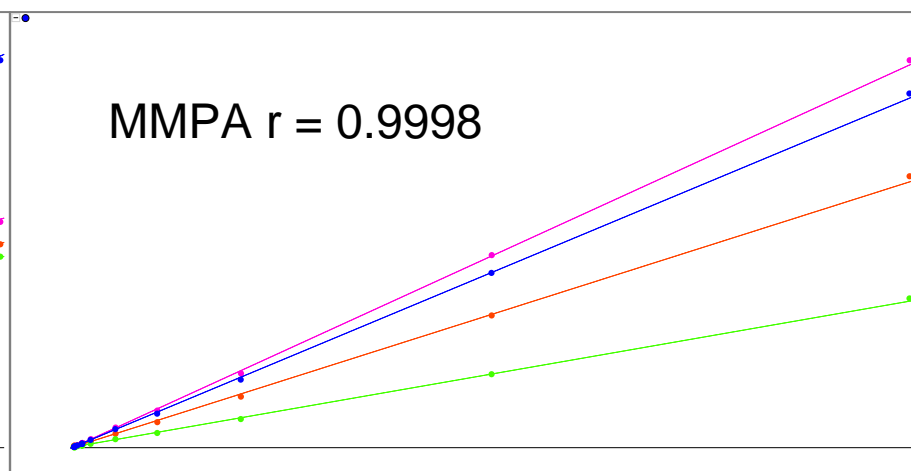
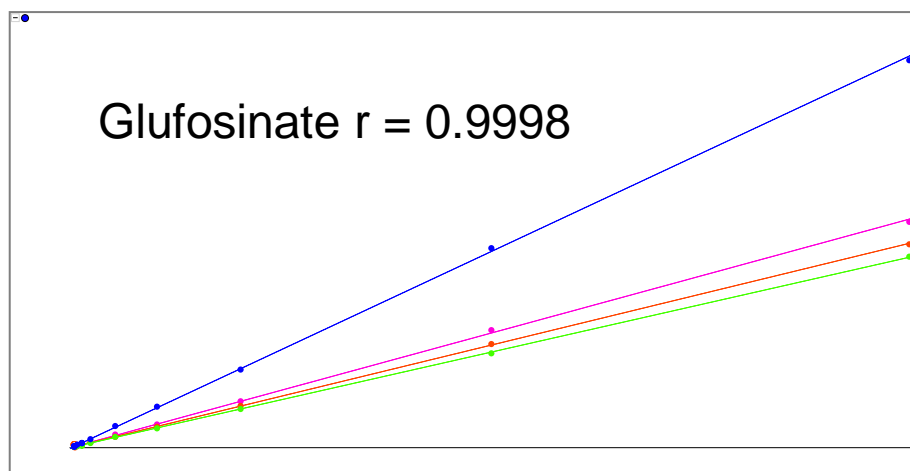
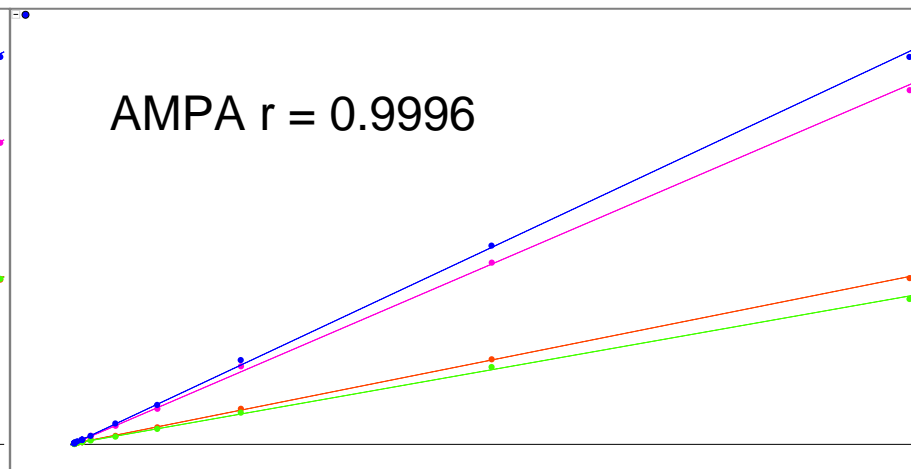
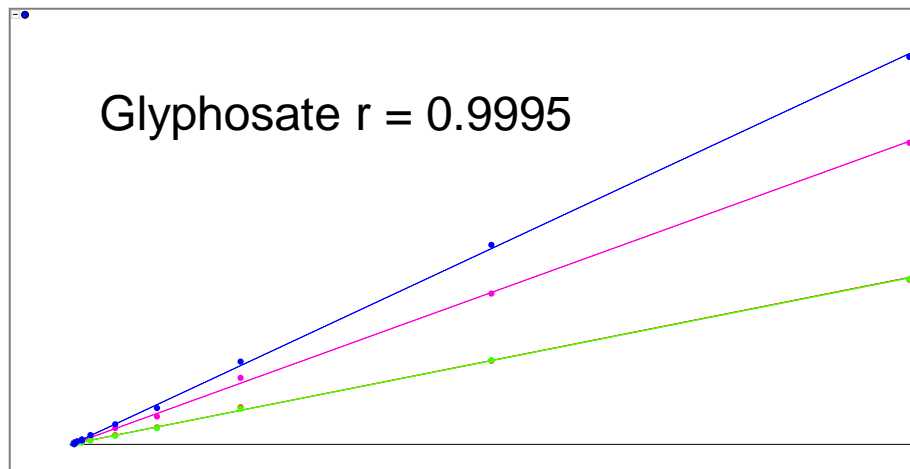
Glufosinate %CV = 8.70% (n = 5)



MMPA %CV = 8.35% (n = 5)



# Linear Dynamic Range 0.1 to 100 ng/mL



Accuracies between 80 and 120%

# Glyphosate in Beer

## German Beer Industry in Shock over Glyphosate Contamination

Posted on Feb 25 2016 - 3:54pm by Sustainable Pulse

« PREVIOUS | NEXT »

Categorized as  
Breaking News  
News  
Sustainable Food

The Munich Environmental Institute (Umweltinstitut München) has released shocking results Thursday of laboratory testing it has completed on 14 of the most sold beers in Germany. The probable carcinogen and World's most used herbicide - glyphosate - was found in all of the 14 beers tested.

9351

Tagged as  
Franziskaner Wei  
glyphosate  
information  
IQ  
Munich  
Environmental  
Institute  
Paulaner Wei  
World Health  
Organization

Tweet

Like 10K

+1 62

Pin it 22



## German Beer - Glyphosate Testing Results:

Hasseröder Pils - 29,74 µg/l (ppb)

Jever Pils - 23,04 µg/l

Warsteiner Pils - 20,73 µg/l

Radeberger Pilsner - 12,01 µg/l

Veltins Pilsener - 5,78 µg/l

Oettinger Pils - 3,86 µg/l

König Pilsener - 3,35 µg/l

Krombacher Pils - 2,99 µg/l

Erdinger Weißbier - 2,92 µg/l

Paulaner Weißbier - 0,66 µg/l

Bitburger Pils - 0,55 µg/l

Beck's Pils - 0,50 µg/l

Franziskaner Weißbier - 0,49 µg/l

Augustiner Helles - 0,46 µg/l

- Beer: 0.5 to 30 µg/L
- Water: glyphosate < 100 ng/L
- Hops and yeast: "too small amount" added to beer to explain residues
- Grain: glyphosate used as desiccants to dry off crops before harvest, however, the direct use of glyphosate on barley turned into malt is banned in Germany



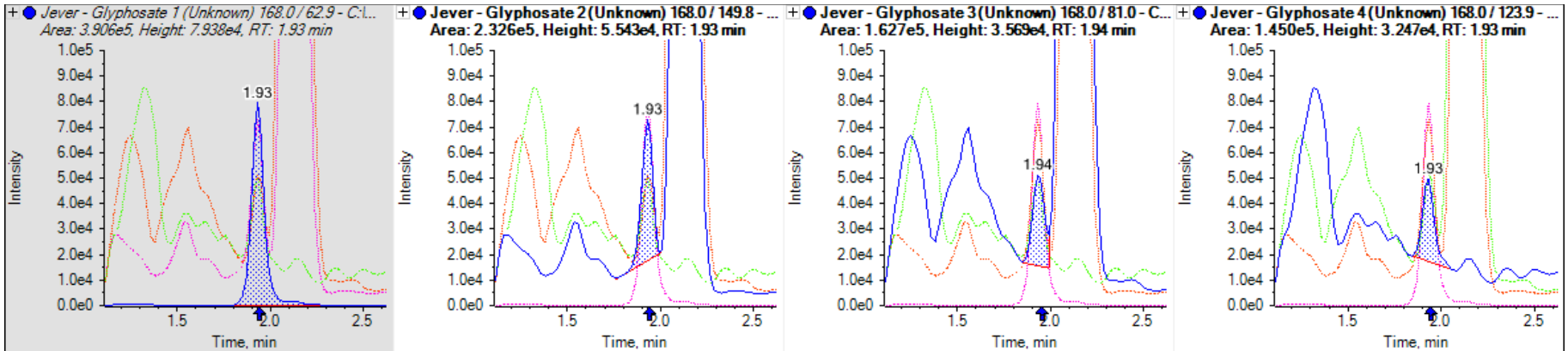
# Experimental

- Sample preparation
  - Degassing of beer
  - Dilution with water (2x) – LOQ ~ 0.2 µg/L
- LC separation
  - Acclaim Trinity Q1 100 x 3 mm 3µm
  - Gradient of water + 50 mM ammonium formate/formic acid (pH=2.9) and acetonitrile at flow rate 0.5 mL/min
  - 3 min 100% A and 3 min acetonitrile wash
  - Injection of 50 µL
- MS/MS detection using QTRAP<sup>®</sup> 6500+ system
  - IonDrive<sup>™</sup> Turbo V source with ESI probe (negative polarity)
  - IS -4500V, CUR 30 psi, Gas1 50 psi, Gas2 70 psi, CAD high, TEM 700°C
  - *Scheduled* MRM<sup>™</sup> algorithm (Q3 low resolution)

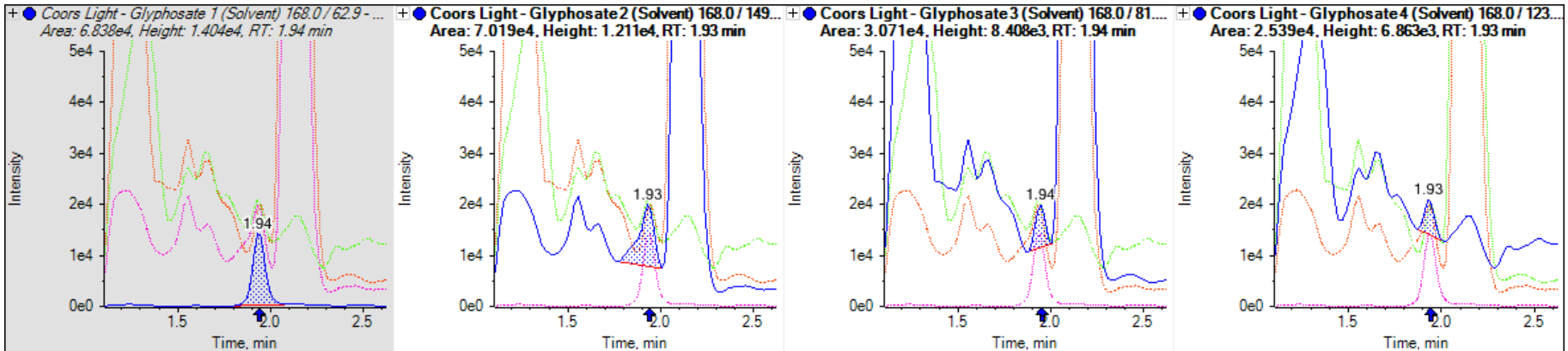
Compound	Q1 (amu)	Q3 (amu)	DP (V)	CE (V)
Glyphosate	168	63	-30	-26
	168	150	-30	-14
	168	124	-30	-16
	168	81	-30	-20

# Examples of Beer Tested for Glyphosate (1)

German pilsner: glyphosate = 21.6  $\mu\text{g/L}$  (identified using 4 MRM transitions  $\pm 30\%$ )

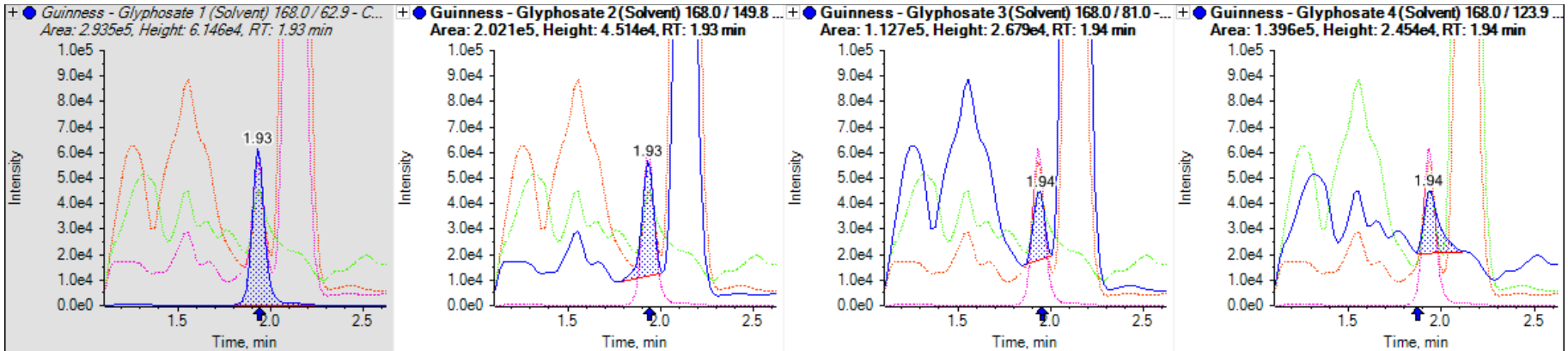


American Light beer: glyphosate = 3.8  $\mu\text{g/L}$  (identified using 3 MRM transitions  $\pm 30\%$ )

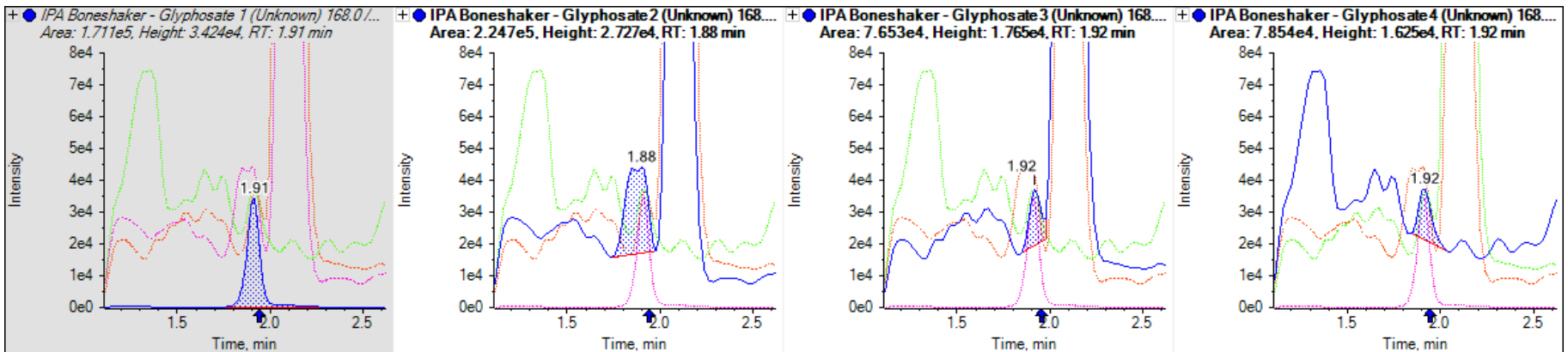


# Examples of Beer Tested for Glyphosate (2)

Irish stout: glyphosate = 16.2  $\mu\text{g/L}$  (identified using 4 MRM transitions  $\pm 30\%$ )

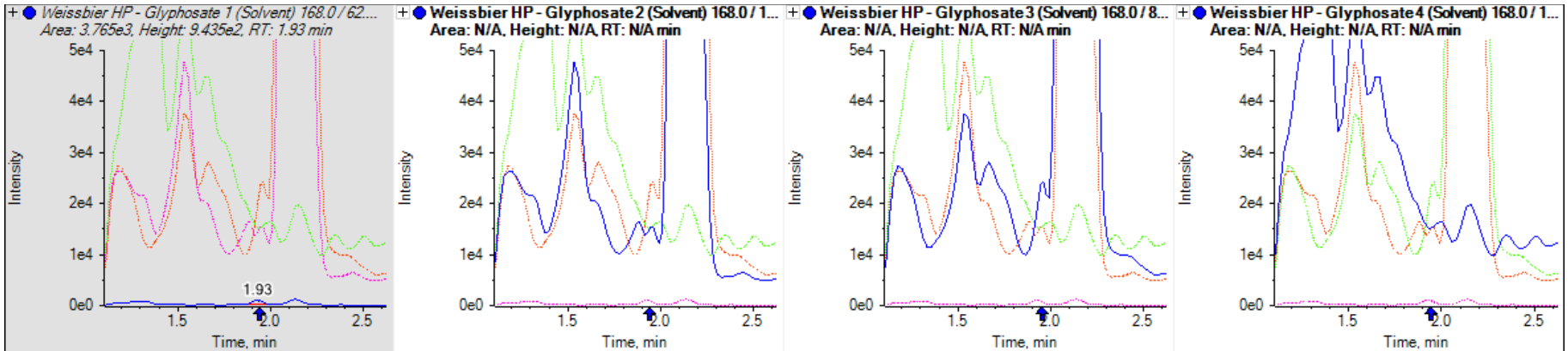


Canadian craft IPA: glyphosate = 9.5  $\mu\text{g/L}$  (identified using 3 MRM transitions  $\pm 30\%$ )

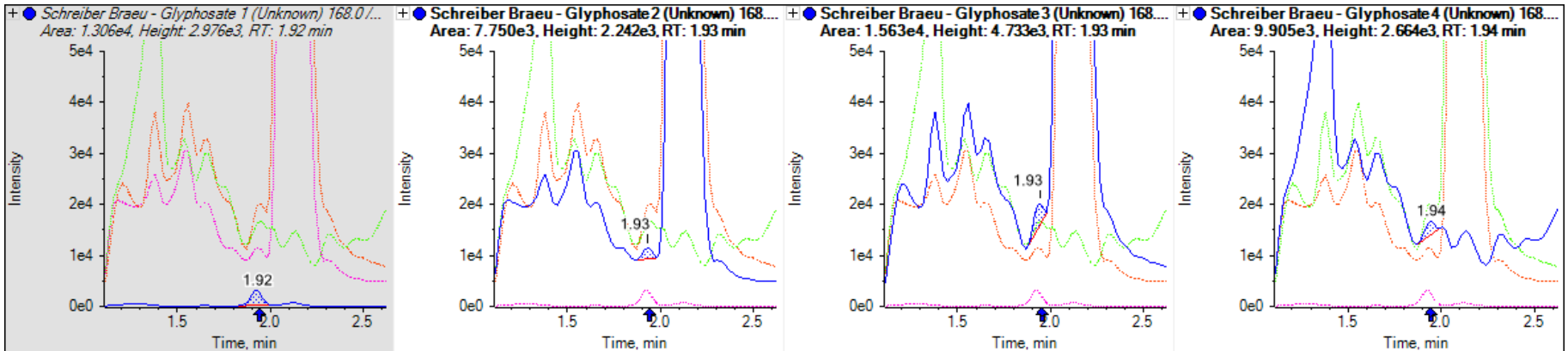


# Examples of Beer Tested for Glyphosate (3)

German Weissbier (wheat): glyphosate = 0.2 µg/L (no secondary transitions for ID)

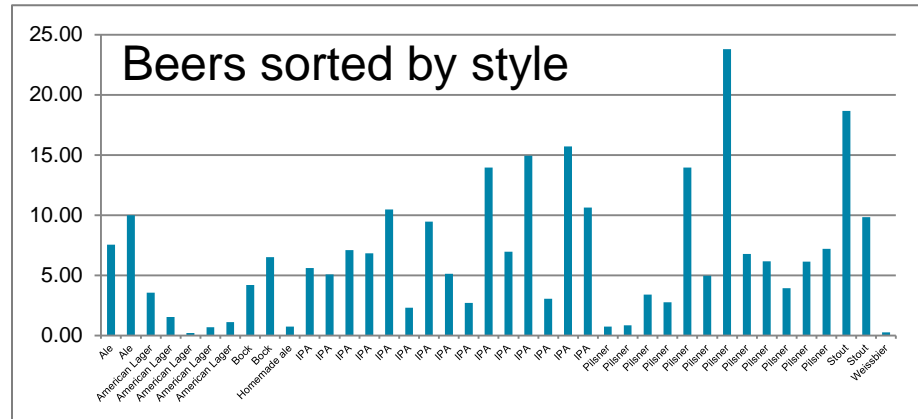
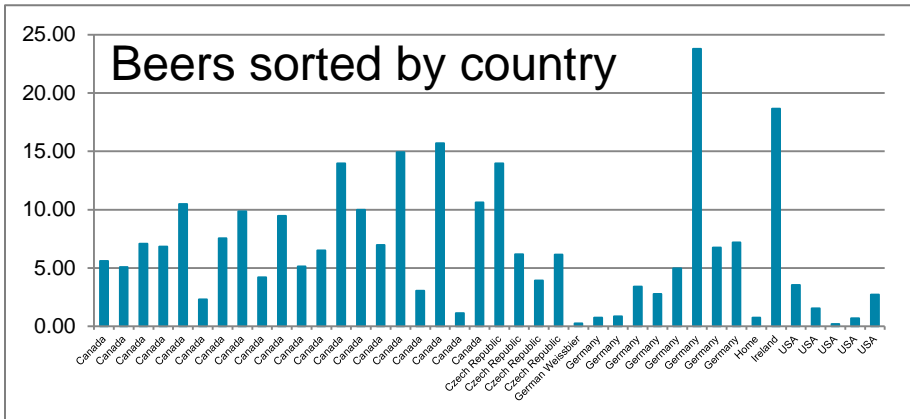
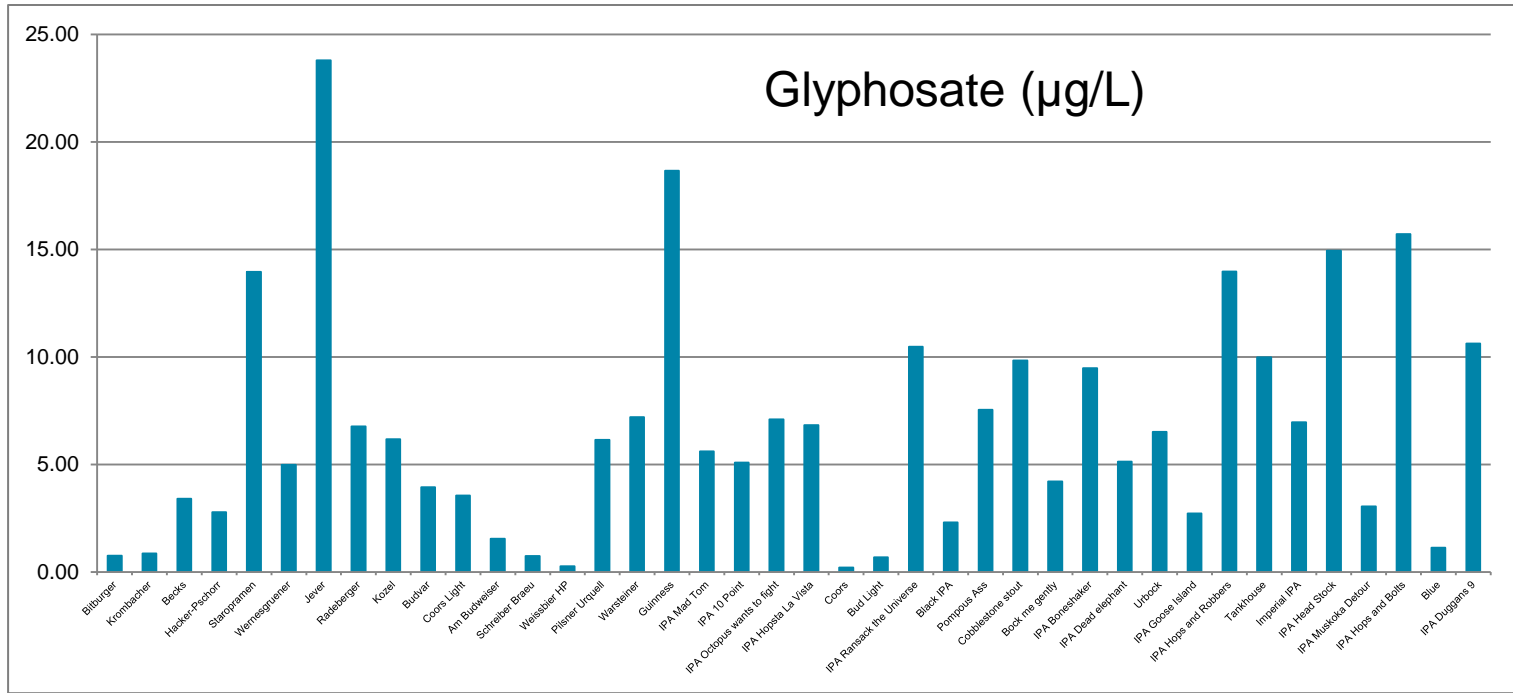


Homemade ale: glyphosate = 0.7 µg/L (identified using 2 MRM transitions ± 30%)



Homemade beer was brewed in Canada using barley malted in Germany.

# Glyphosate in Beers... no Correlation to Origin or Style





# Summary

- LC-MS/MS method for the analysis of underivatized glyphosate and other polar pesticides was developed.
  - Sample preparation: QuPPE with 10x dilution with water
  - Direct injection of 2x diluted beer and undiluted water
  - LC: Trinity Q1 with water + 50 mM ammonium formate/formic acid (pH=2.9) and acetonitrile (N. Chamkasem et al.)
  - MS/MS using QTRAP<sup>®</sup> 6500+ system with IonDrive<sup>™</sup> Turbo V source with ESI probe in negative polarity
  - 4 MRM transitions for simultaneous identification and quantitation
- Method successfully applied to:
  - Extracts of corn and soy with an LOQ of 100 µg/kg (10 ng/mL in extract)
  - Interference can be reduced using SelexION<sup>®</sup> DMS technology
  - Water with an LOQ of 100 ng/L (potential improvements of sensitivity using post-column pH adjustments)
  - Beer with an LOQ of 0.2 µg/L

# Trademarks/Licensing

AB Sciex is doing business as SCIEX.

For Research Use Only. Not for use in diagnostic procedures.

© 2016 AB Sciex. The trademarks mentioned herein are the property of AB Sciex Pte. Ltd. or their respective owners. AB SCIEX™ is being used under license.

Thank you for your attention!

